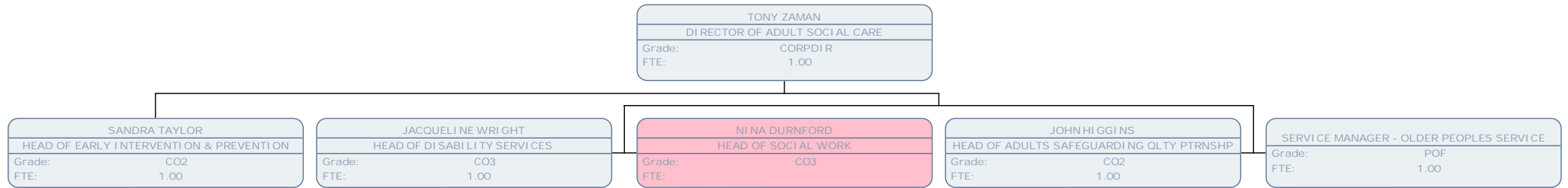
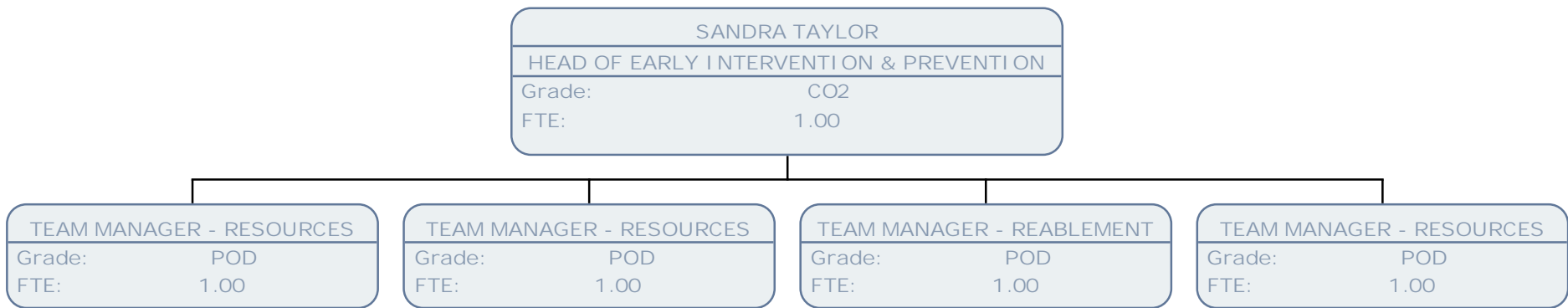


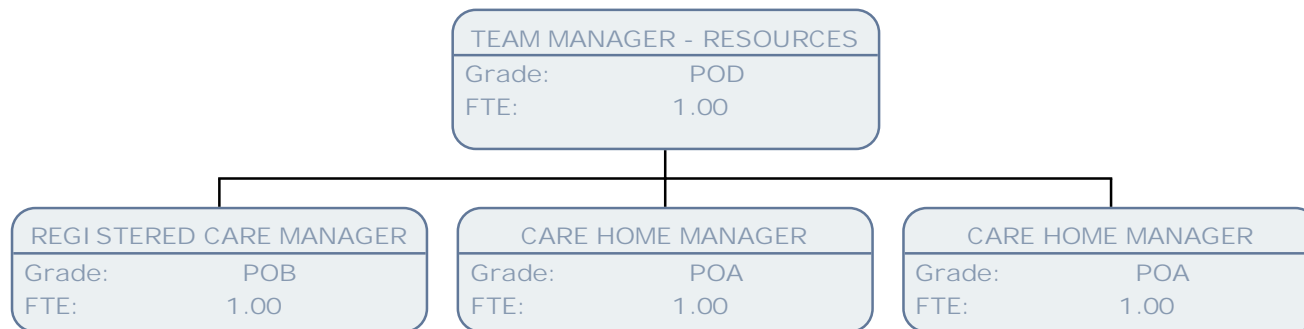
Adult Social Care March

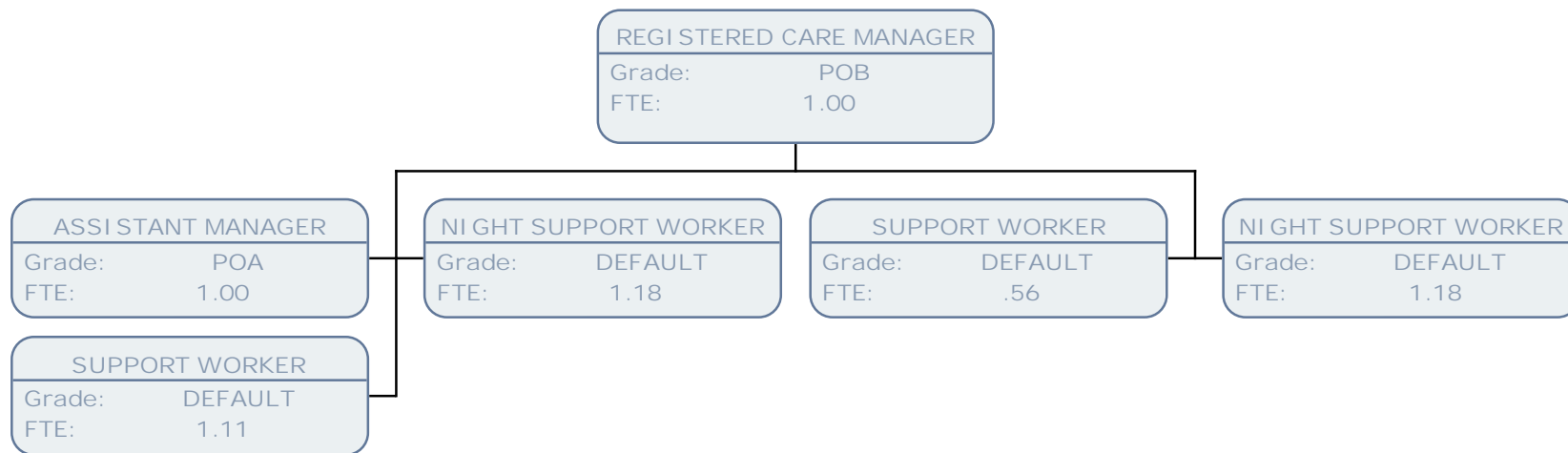
15

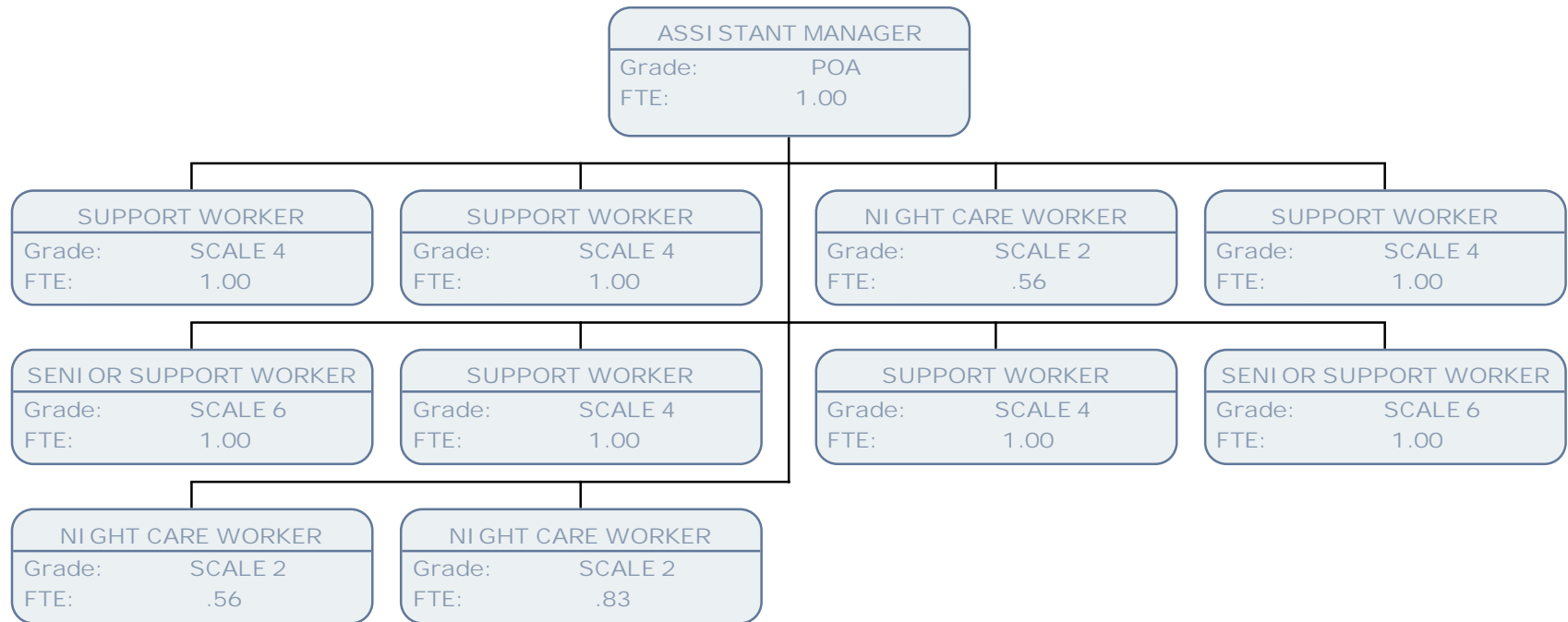
Adult Social Care

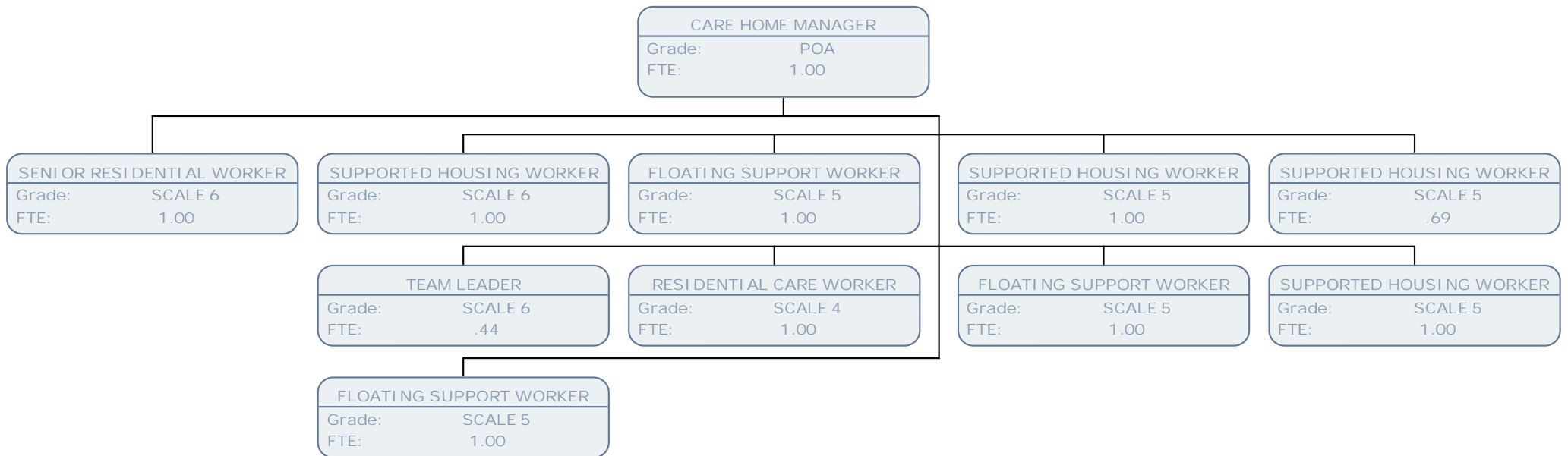


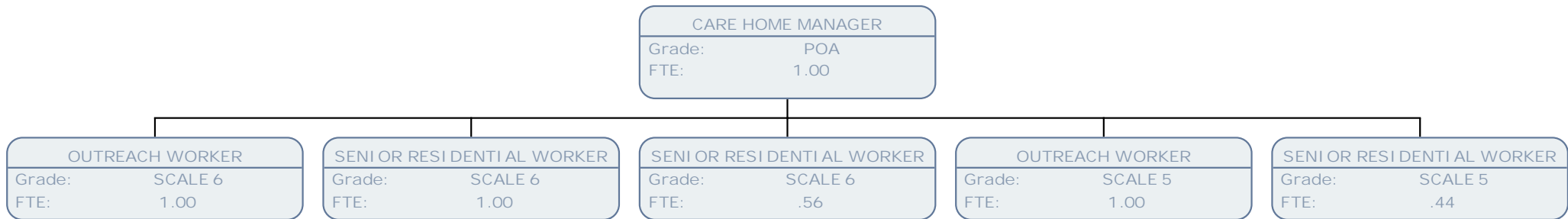


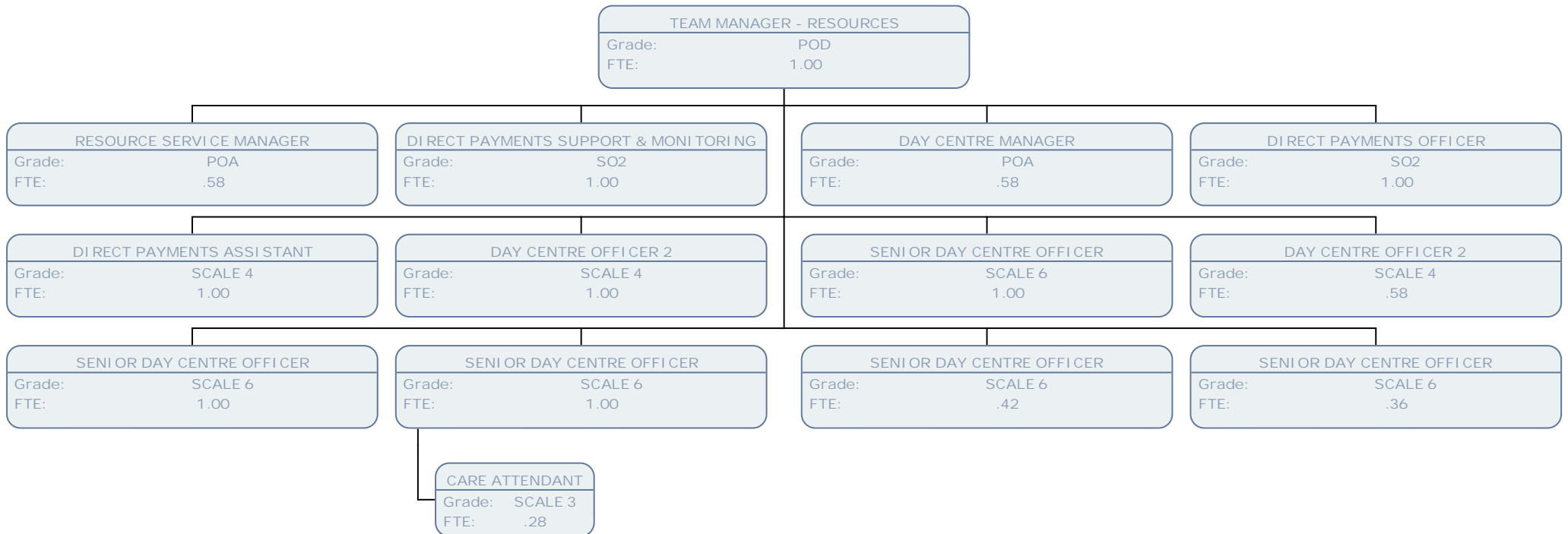


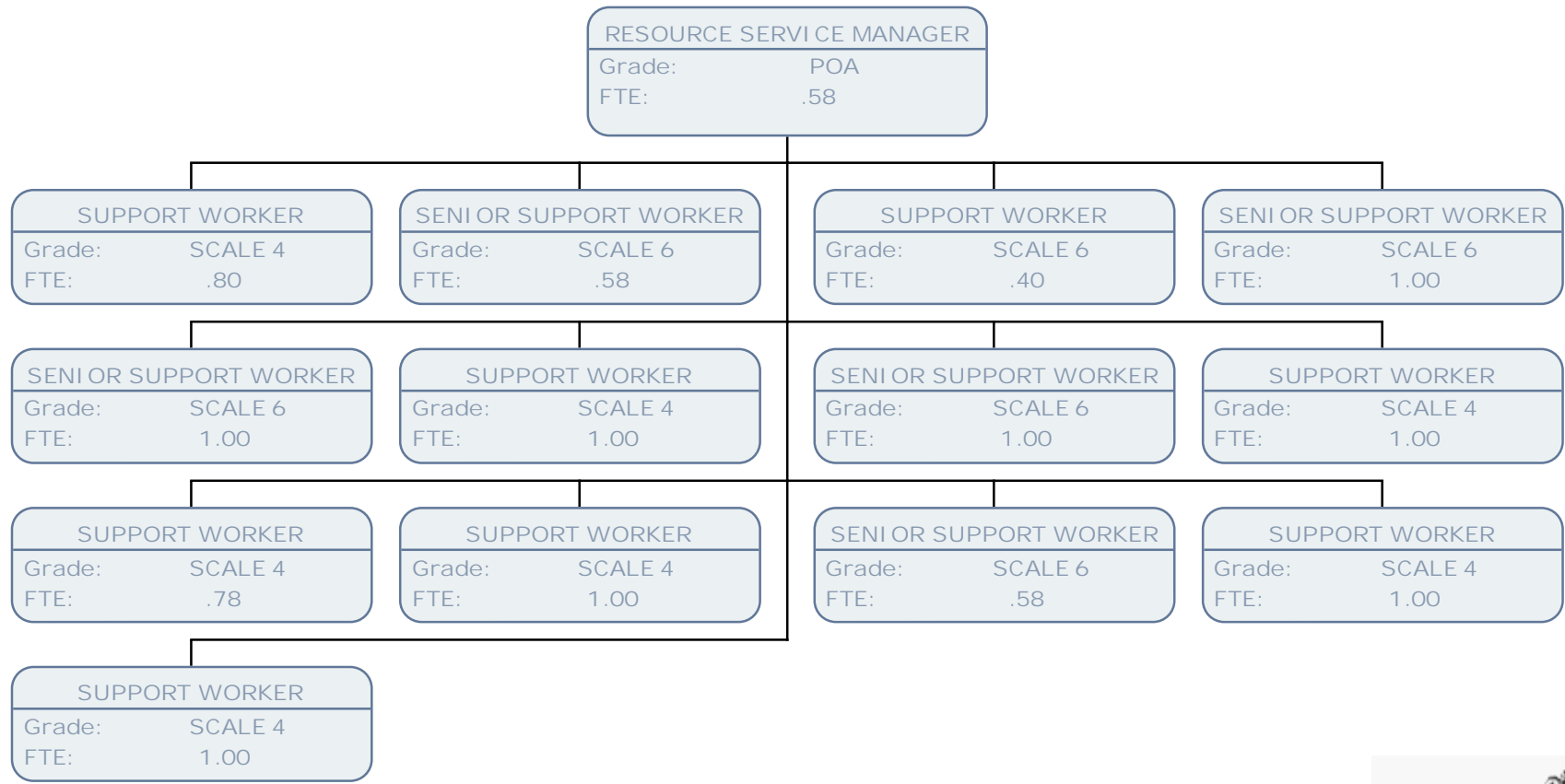


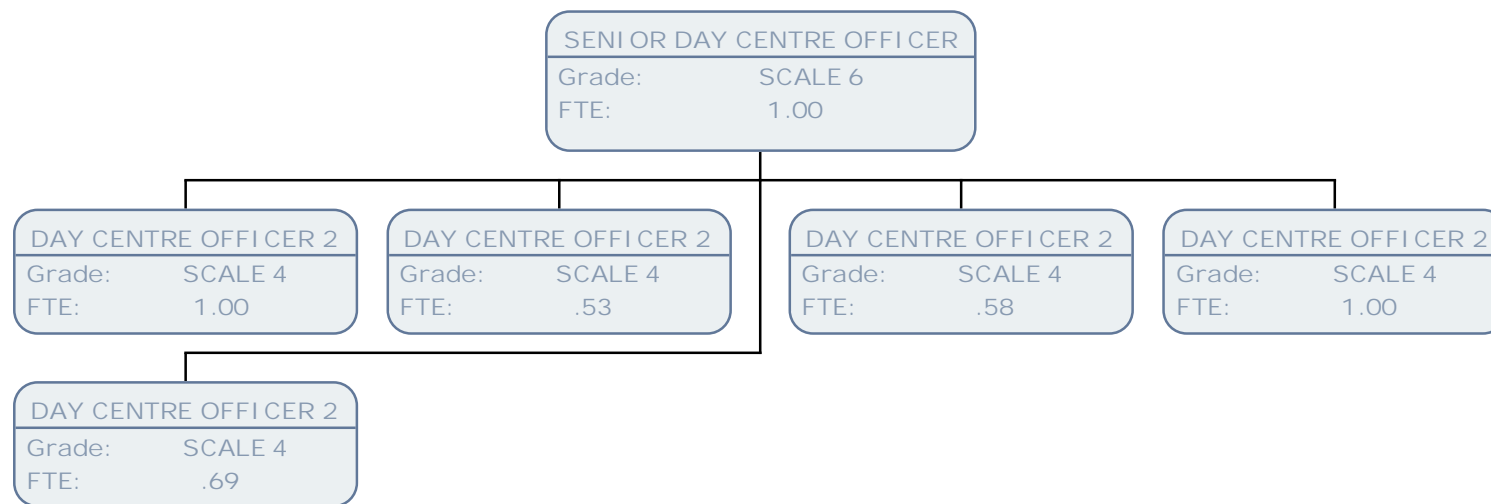


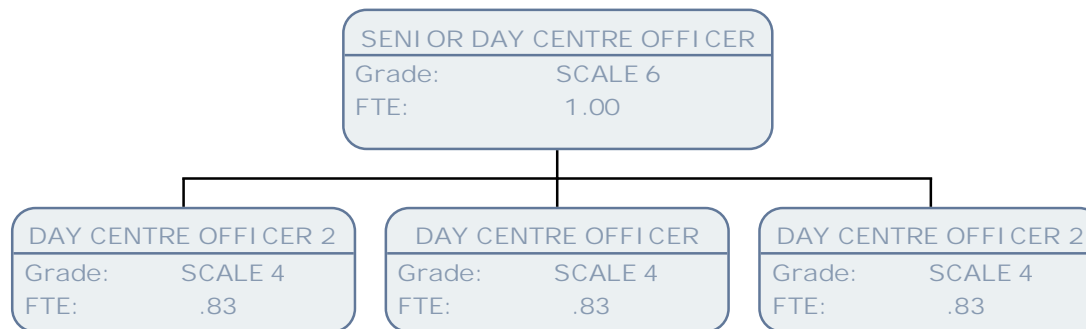


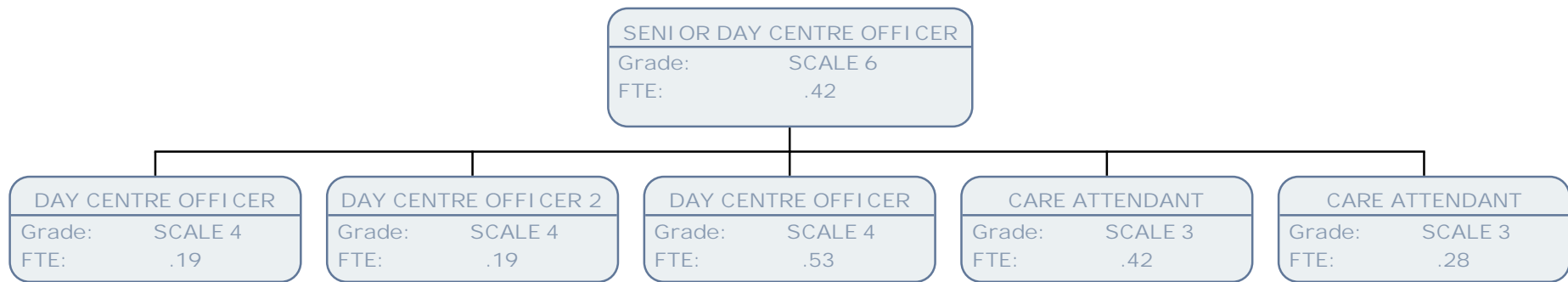


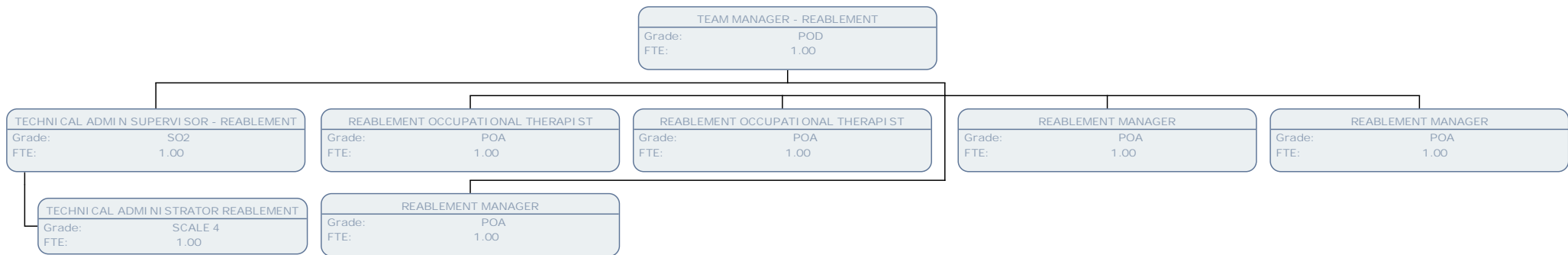




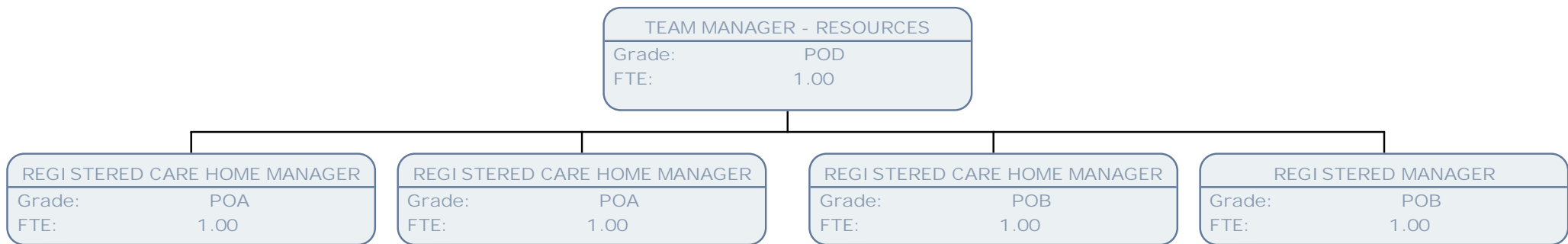


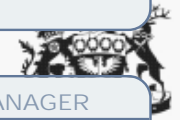






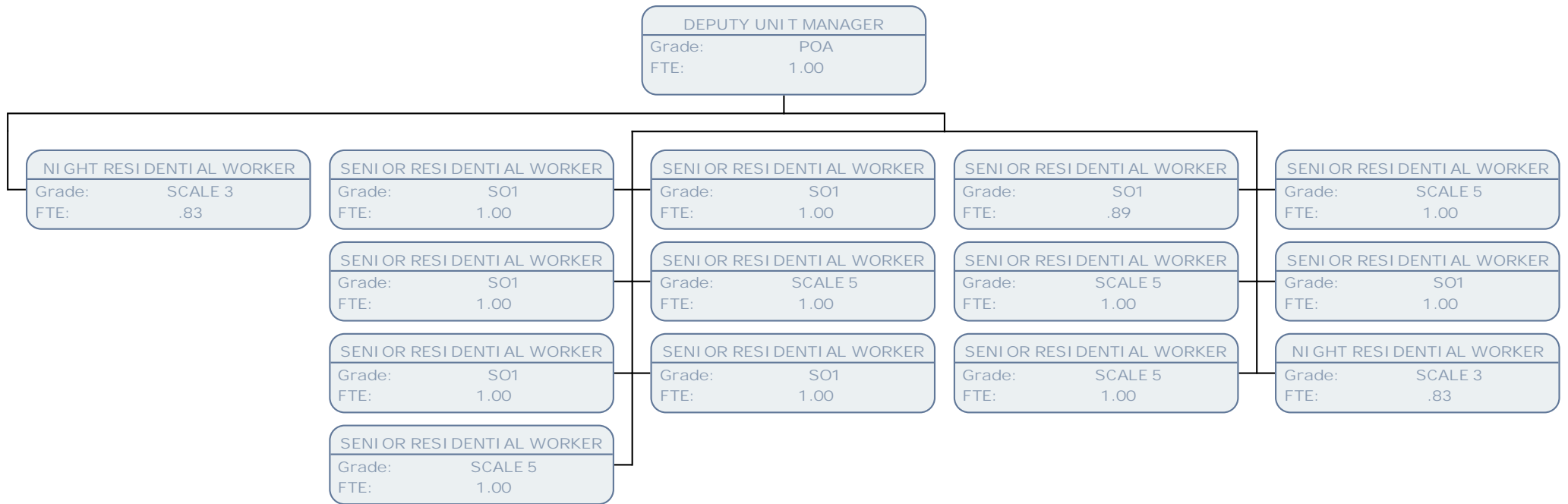


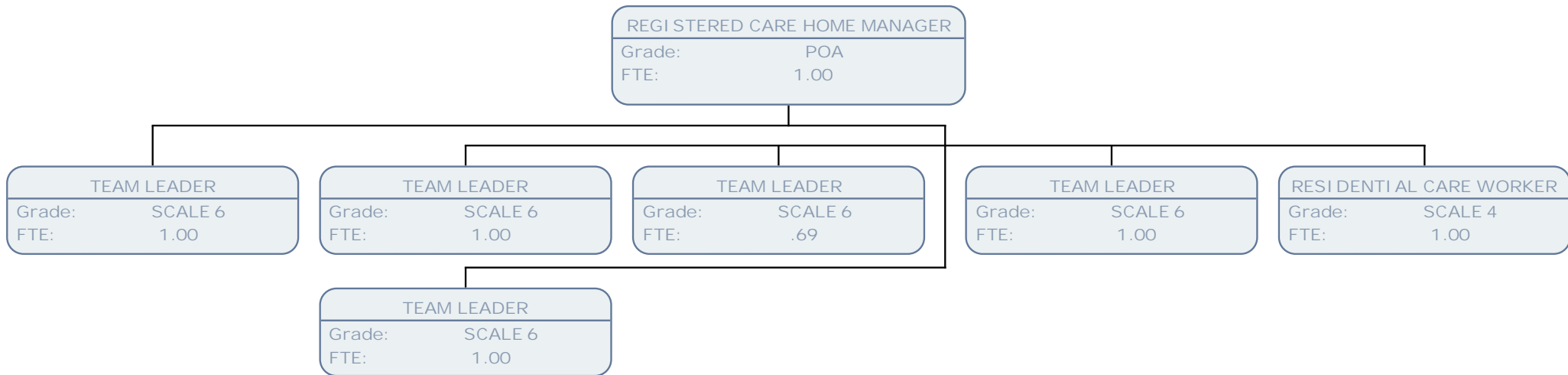


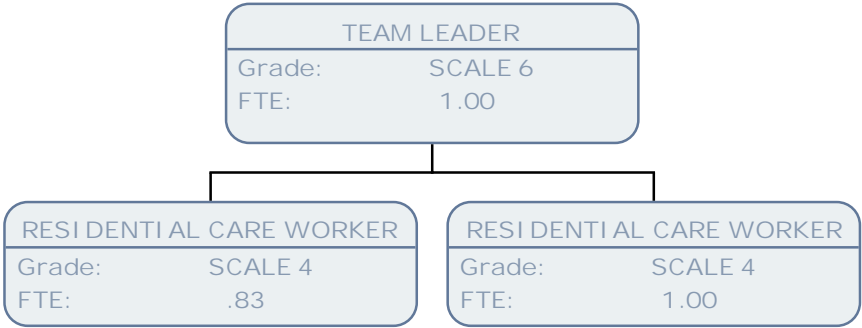


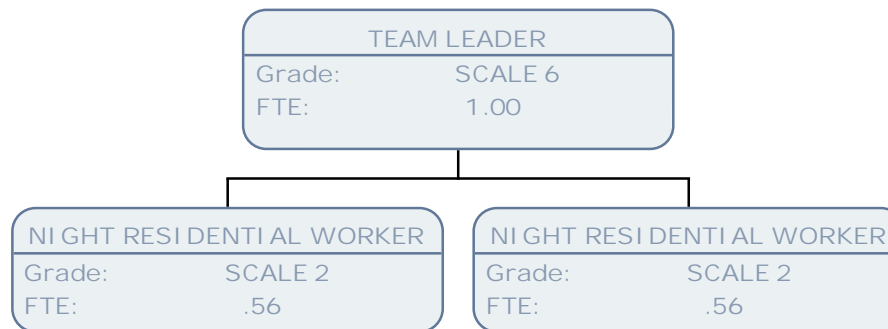
LONDON

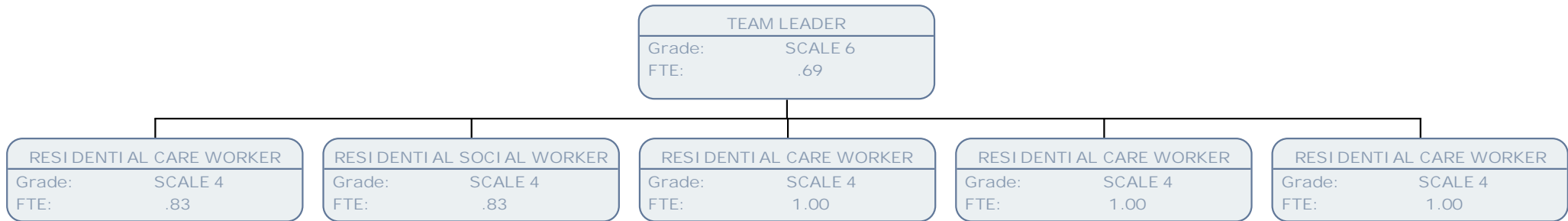
DON

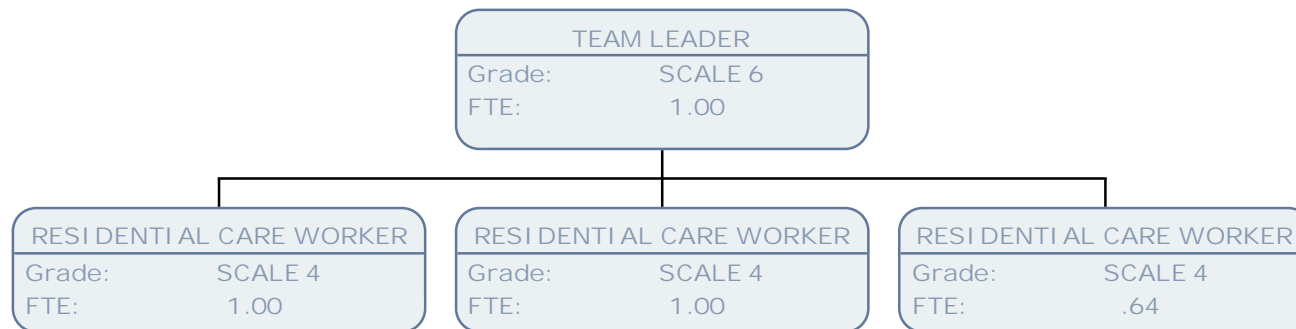


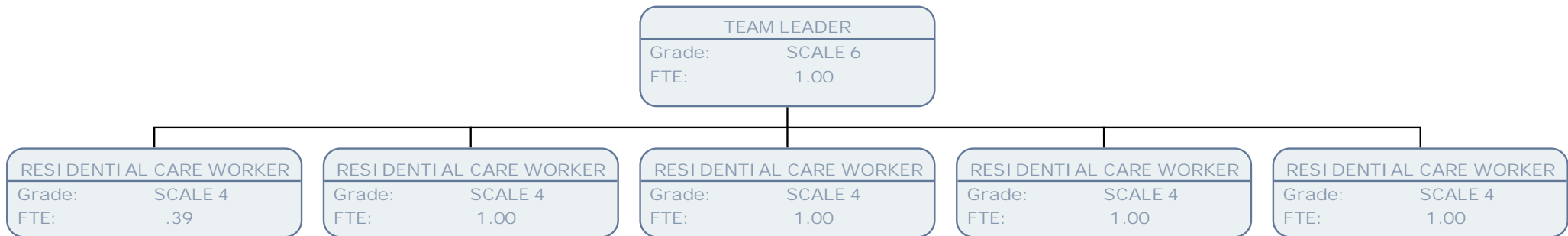


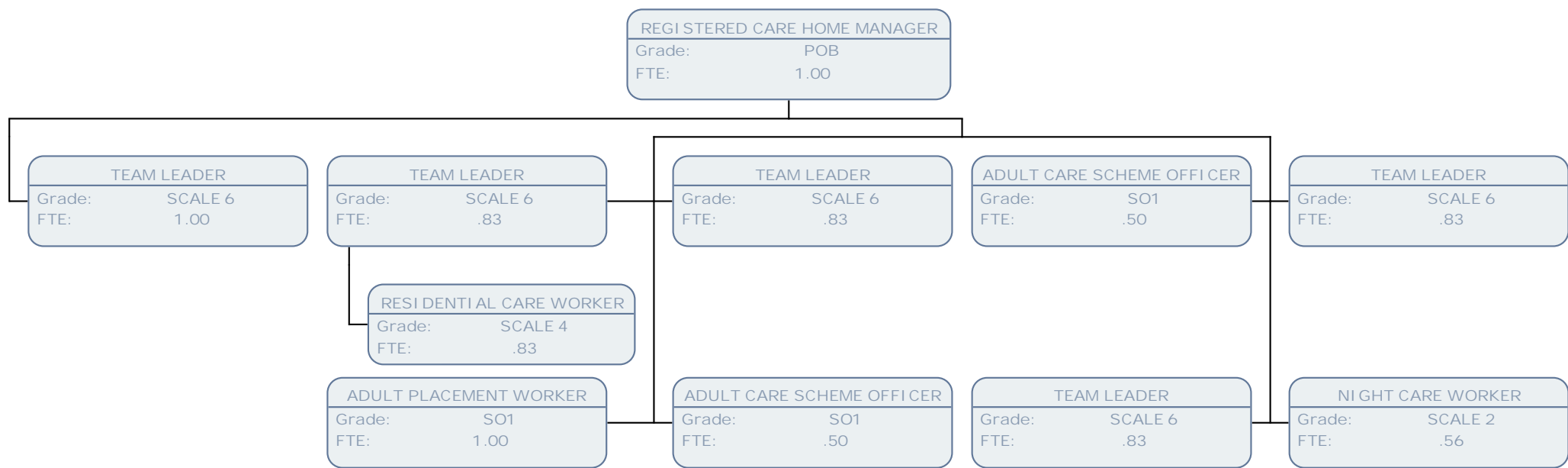


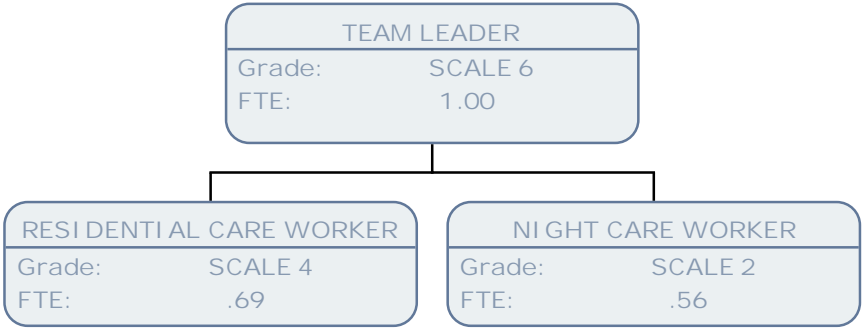


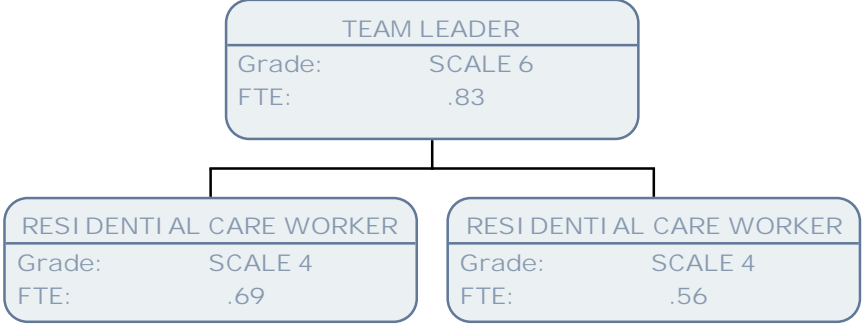


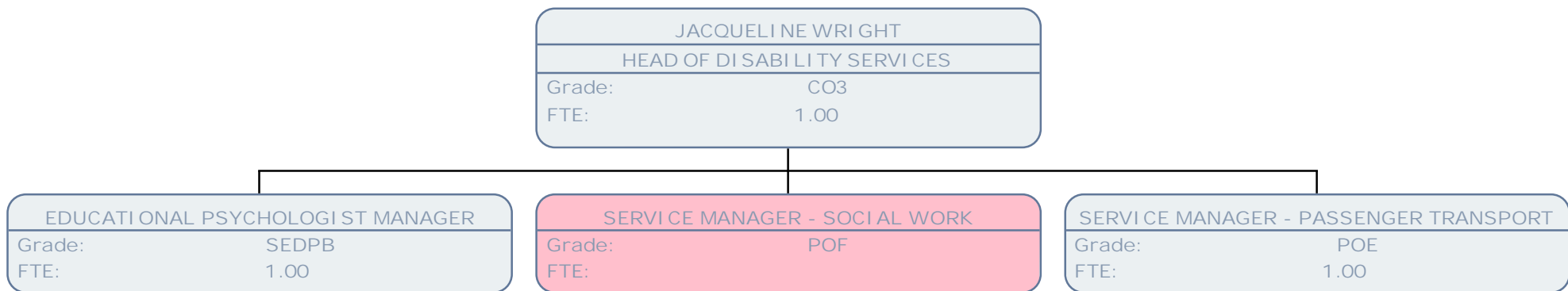


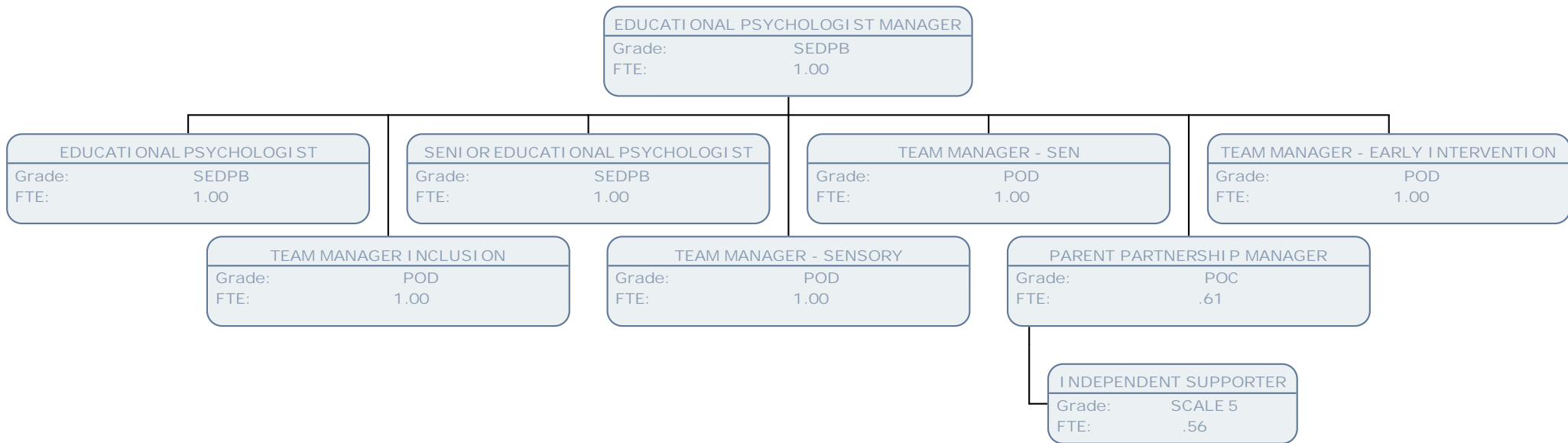


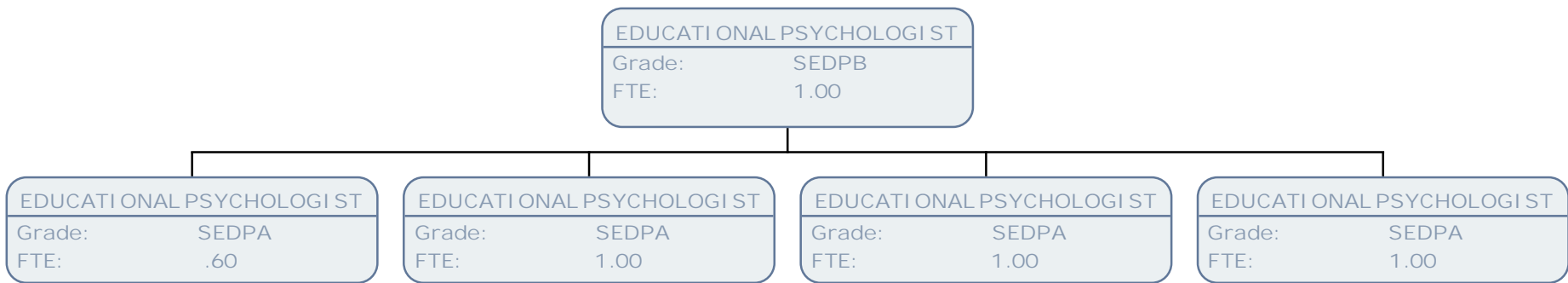


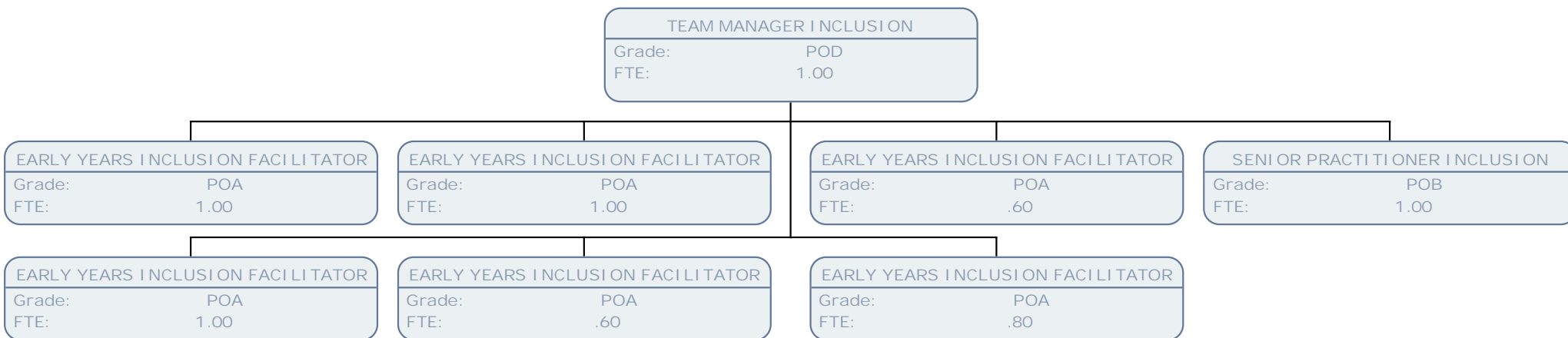


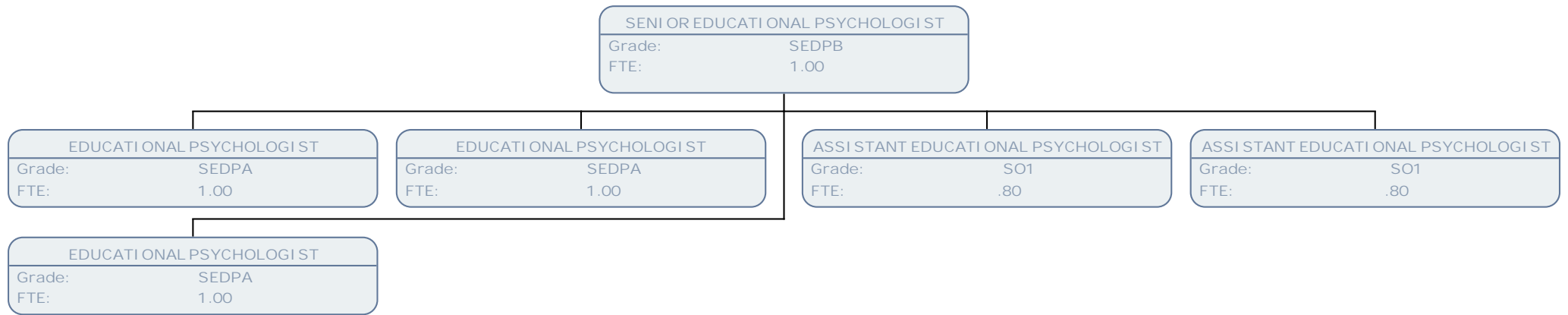


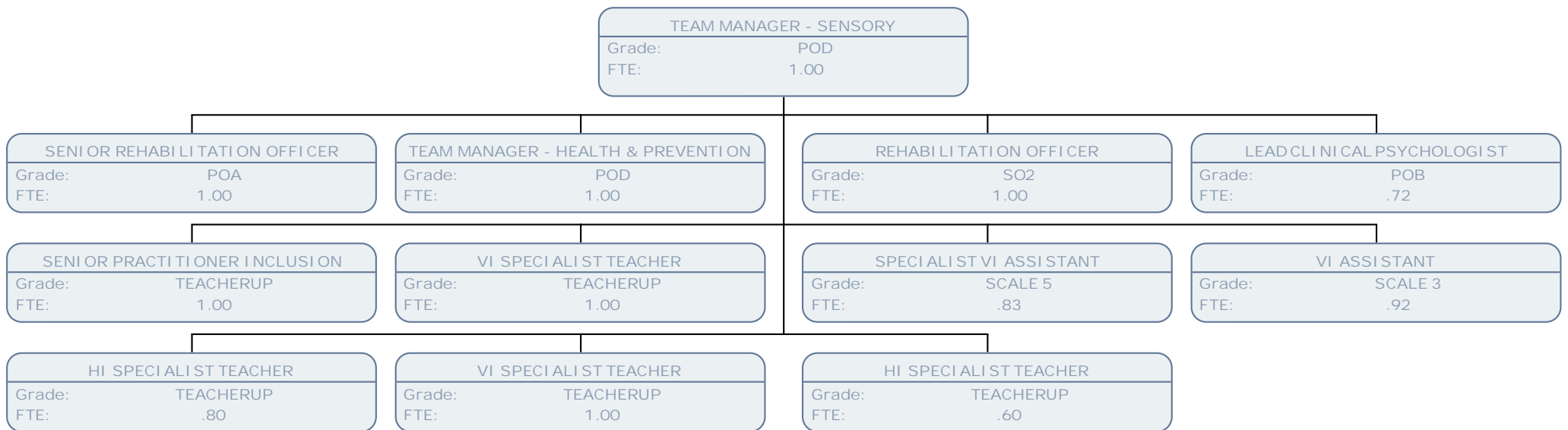


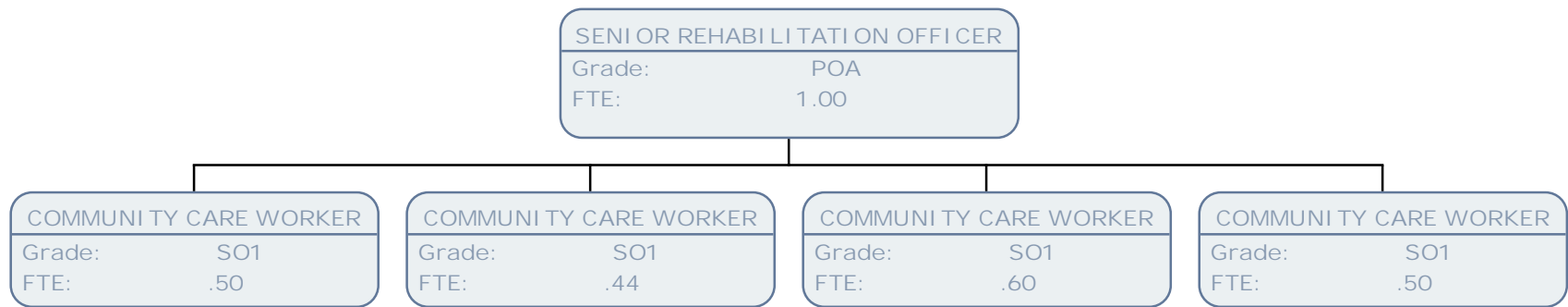


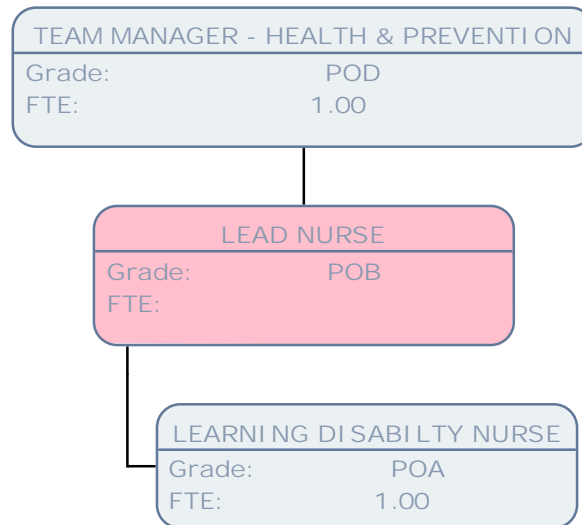


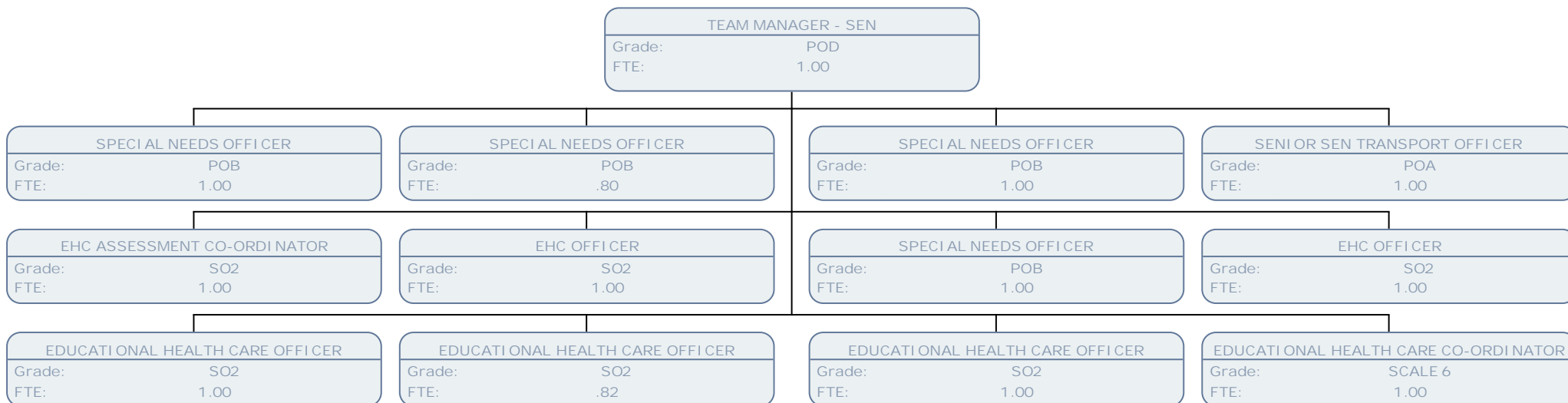


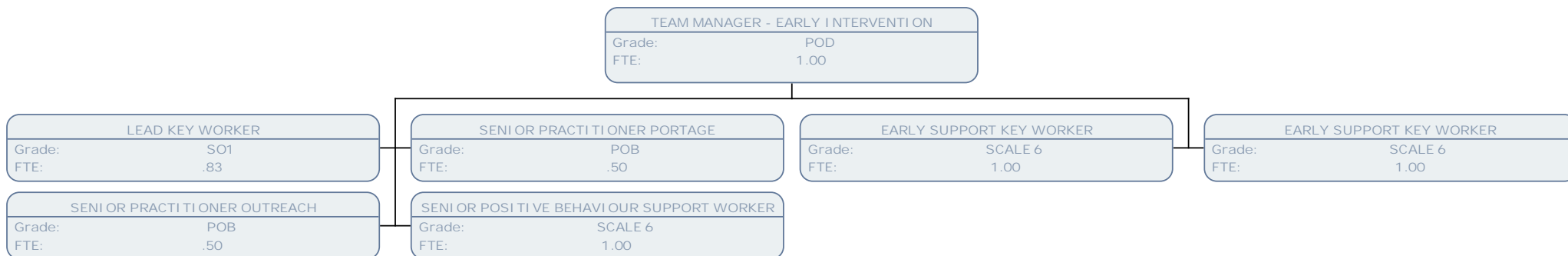


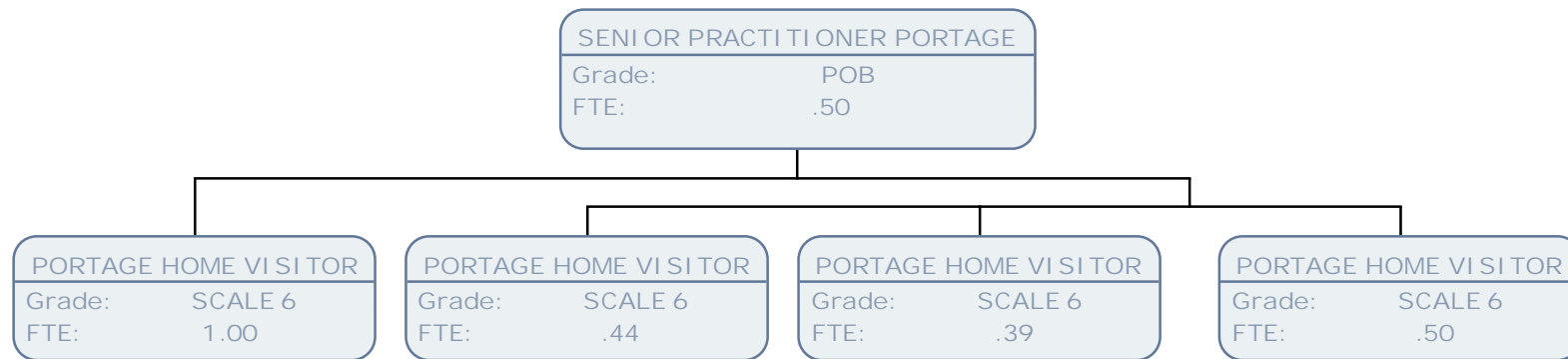


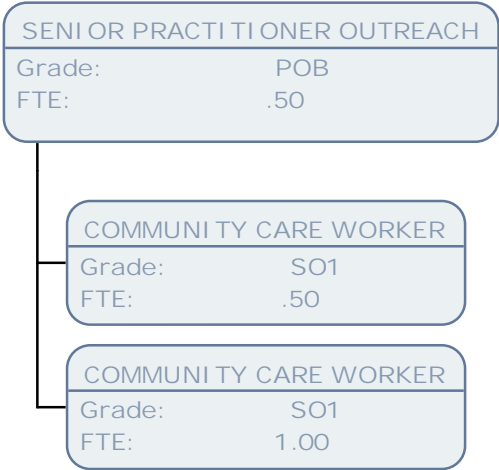










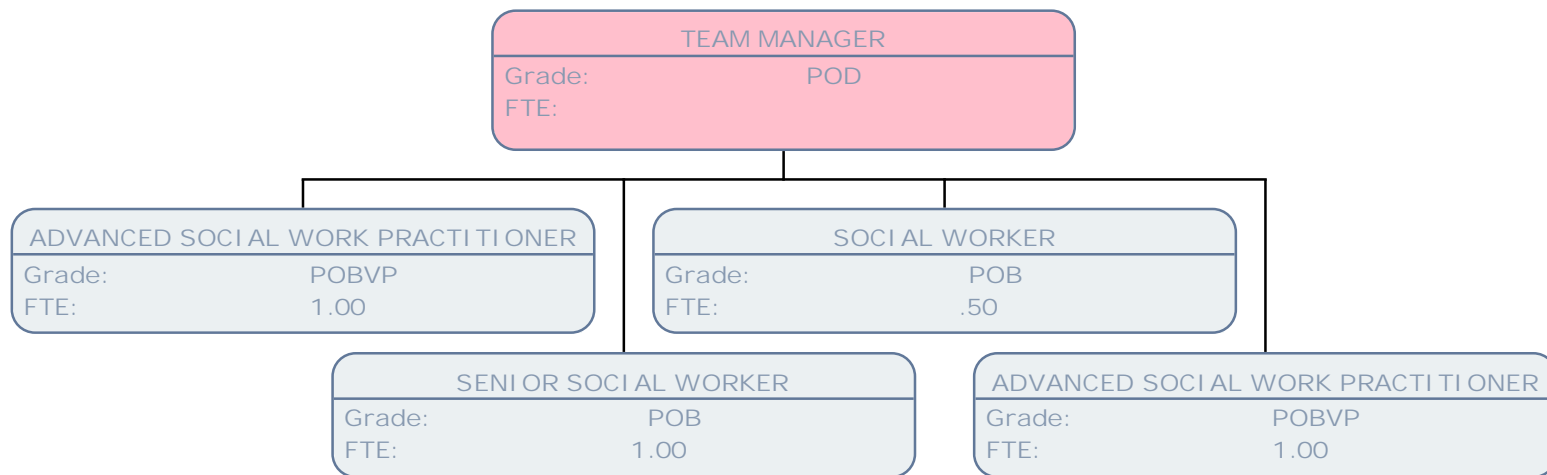


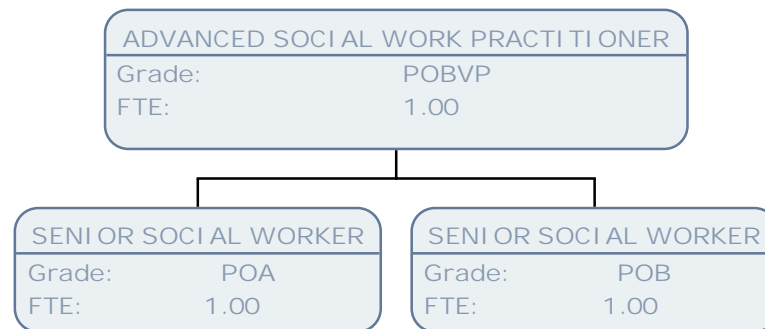
SERVICE MANAGER - SOCIAL WORK
Grade: POF
FTE:

TEAM MANAGER
Grade: POD
FTE:

TEAM MANAGER - DISABILITIES ADULTS
Grade: POD
FTE: 1.00







TEAM MANAGER - DISABILITIES ADULTS	
Grade:	POD
FTE:	1.00

CARE MANAGER SW	
Grade:	POA
FTE:	.40

COMMUNITY CARE WORKER	
Grade:	SO1
FTE:	1.00

COMMUNITY CARE WORKER	
Grade:	SO1
FTE:	1.00

INTER AGENCY TRANSITION CO-ORDINATOR	
Grade:	POB
FTE:	1.00

COMMUNITY CARE WORKER	
Grade:	SO1
FTE:	1.00

COMMUNITY CARE WORKER	
Grade:	SO1
FTE:	1.00

CARE MANAGER SW	
Grade:	POA
FTE:	1.00

SOCIAL WORKER	
Grade:	POA
FTE:	1.00

SENIOR CARE MANAGER	
Grade:	POB
FTE:	1.00

CARE MANAGER SW	
Grade:	POA
FTE:	1.00

TRANSITION CARE MANAGER SW	
Grade:	POB
FTE:	.78

CARE MANAGER SW	
Grade:	POA
FTE:	1.00

CARE MANAGER SW	
Grade:	SO1
FTE:	1.00

NEWLY QUALIFIED SOCIAL WORKER	
Grade:	SO1
FTE:	1.00

SOCIAL WORKER - ADVANCED PRACTITIONER	
Grade:	POC
FTE:	1.00

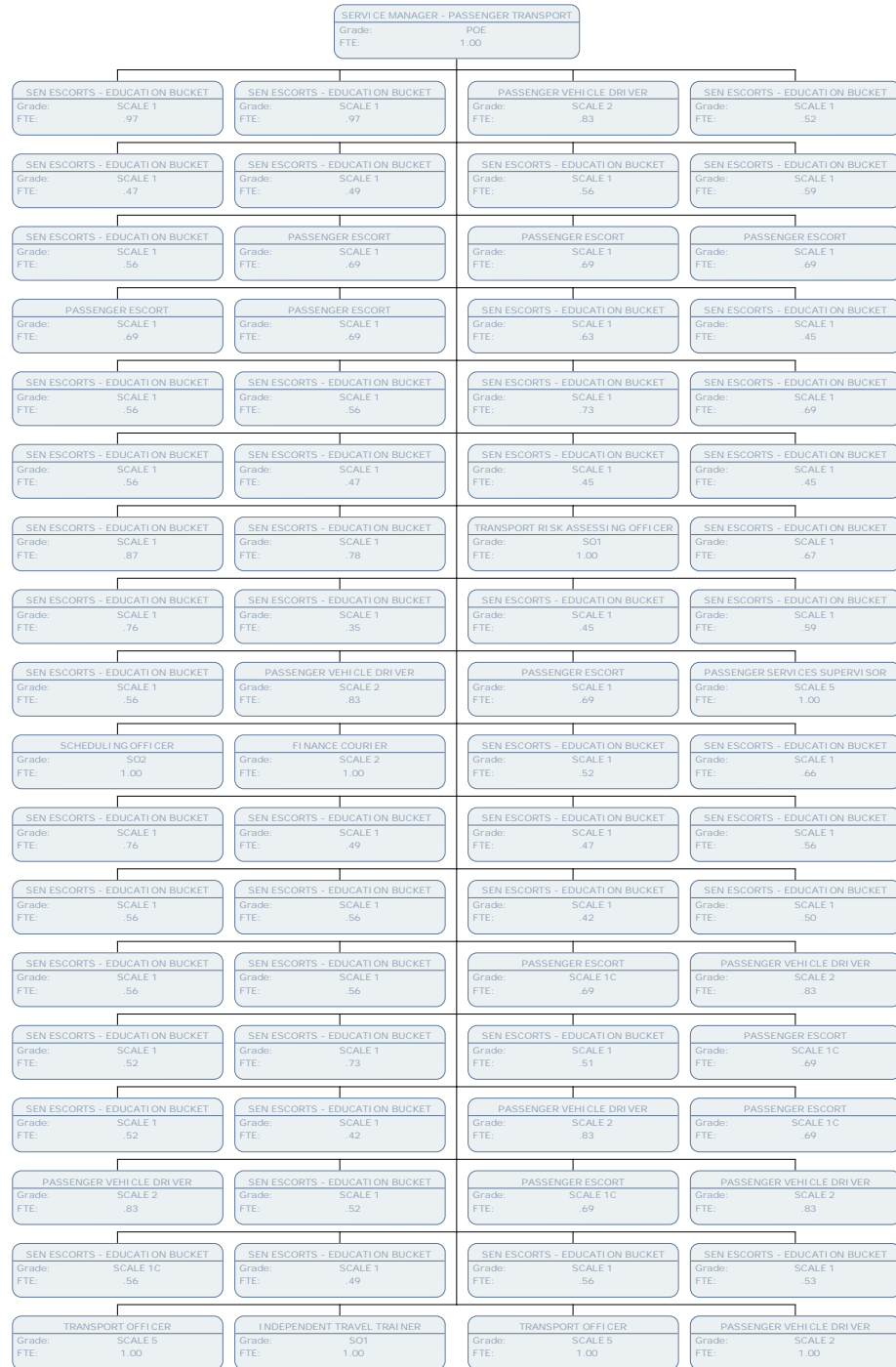
SOCIAL WORKER - ADVANCED PRACTITIONER	
Grade:	POC
FTE:	1.00

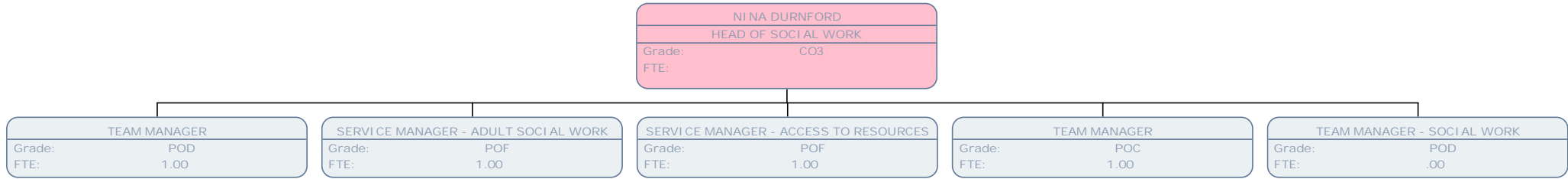
SOCIAL WORKER - ADVANCED PRACTITIONER	
Grade:	POC
FTE:	.89

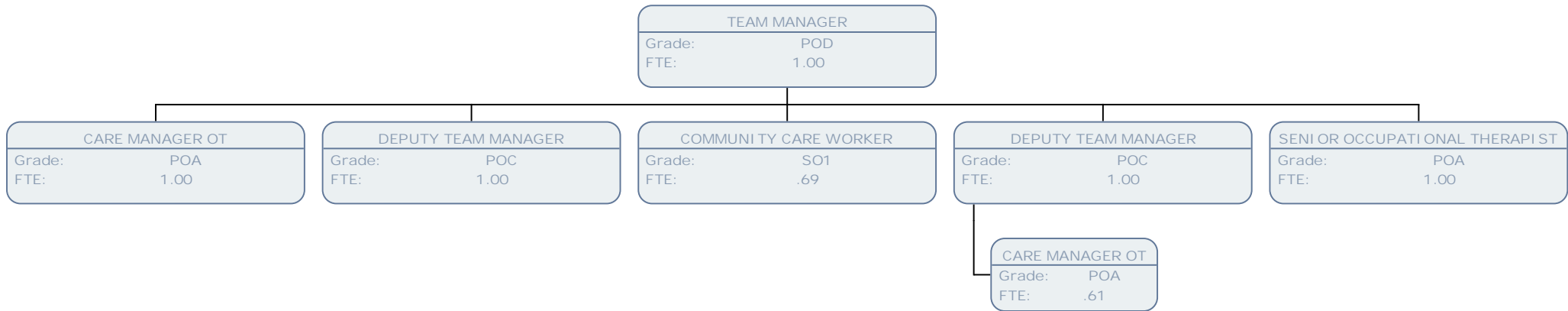
COMMUNITY CARE WORKER	
Grade:	SO1
FTE:	1.00

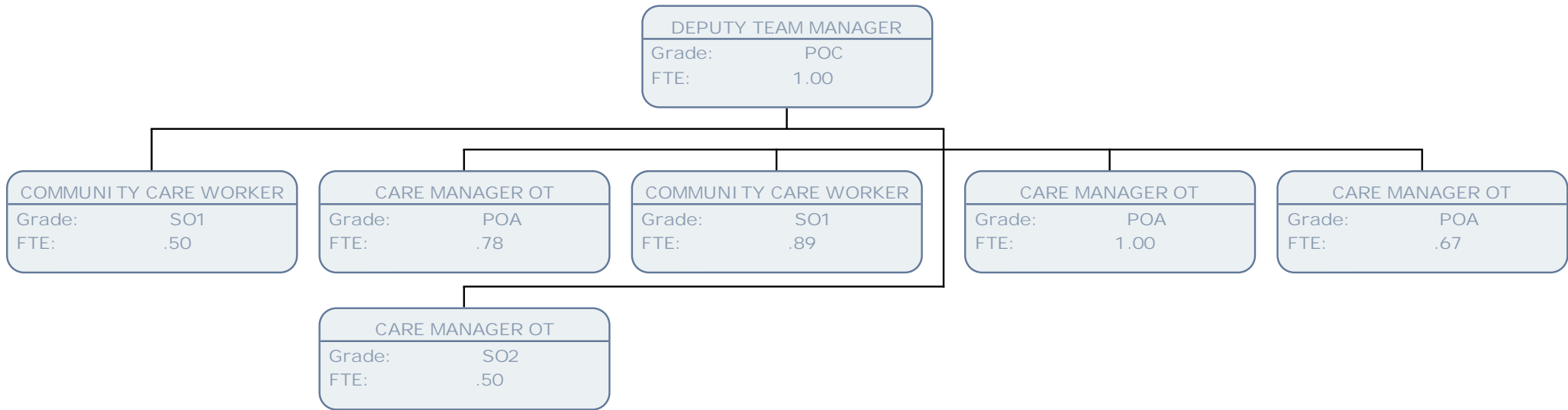
CARE MANAGER (SO2 - POA)	
Grade:	SO1
FTE:	1.00

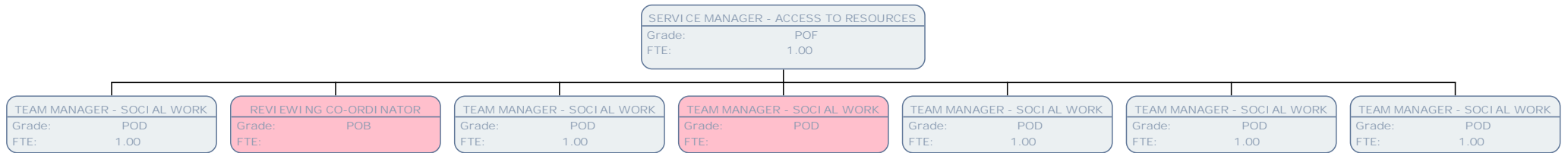


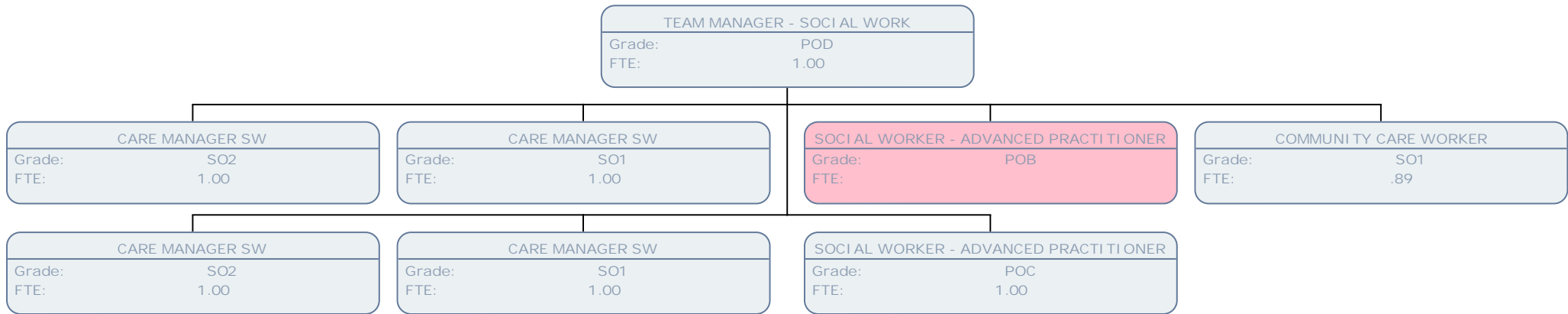


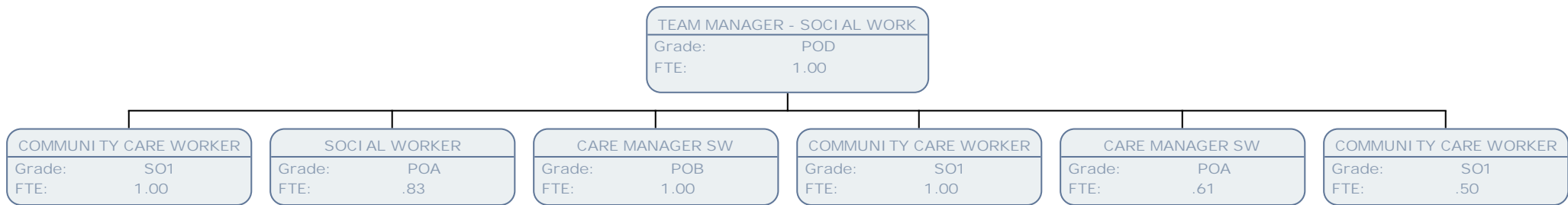


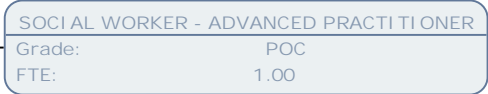
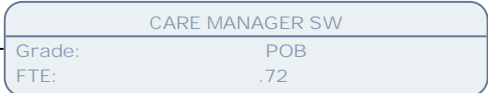
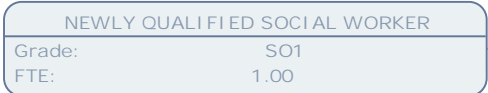
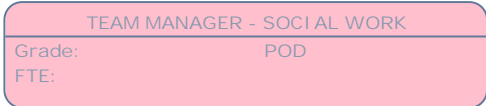


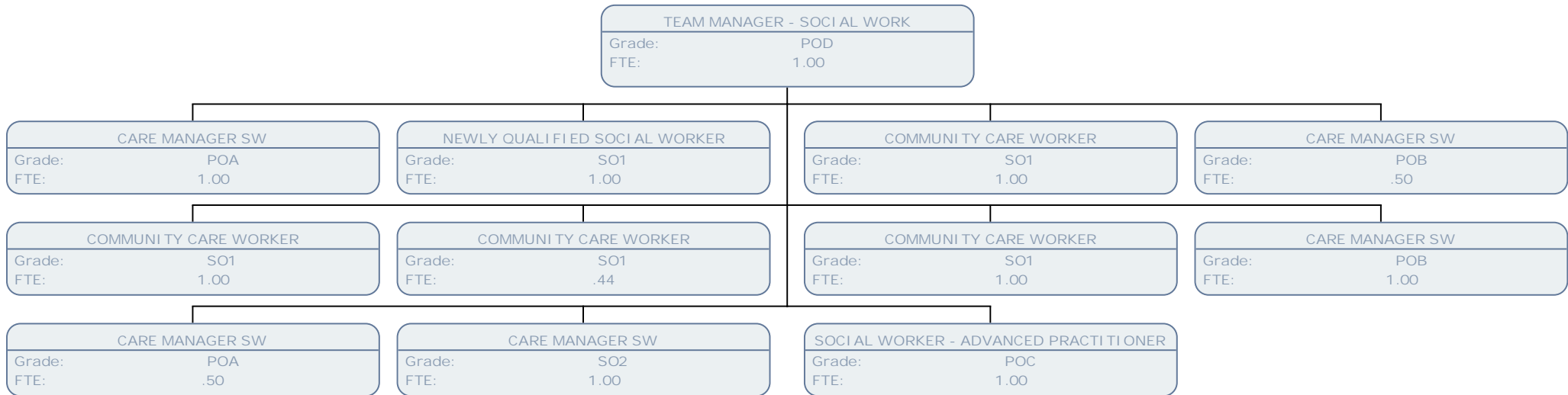


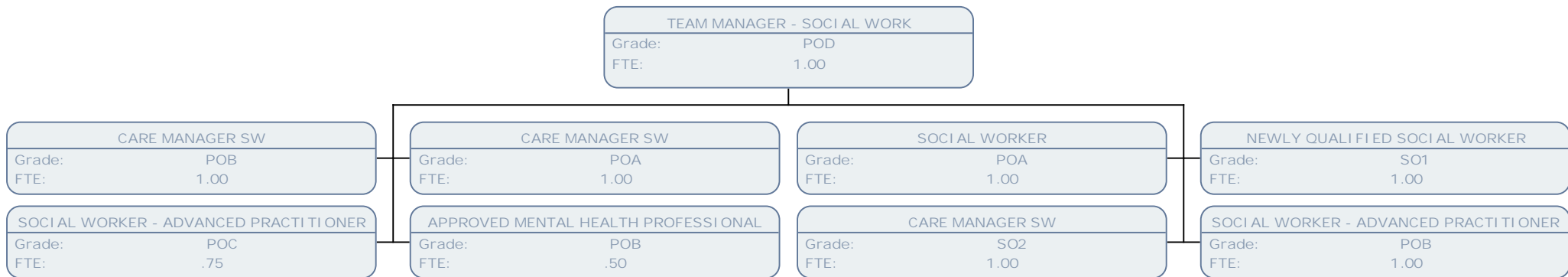


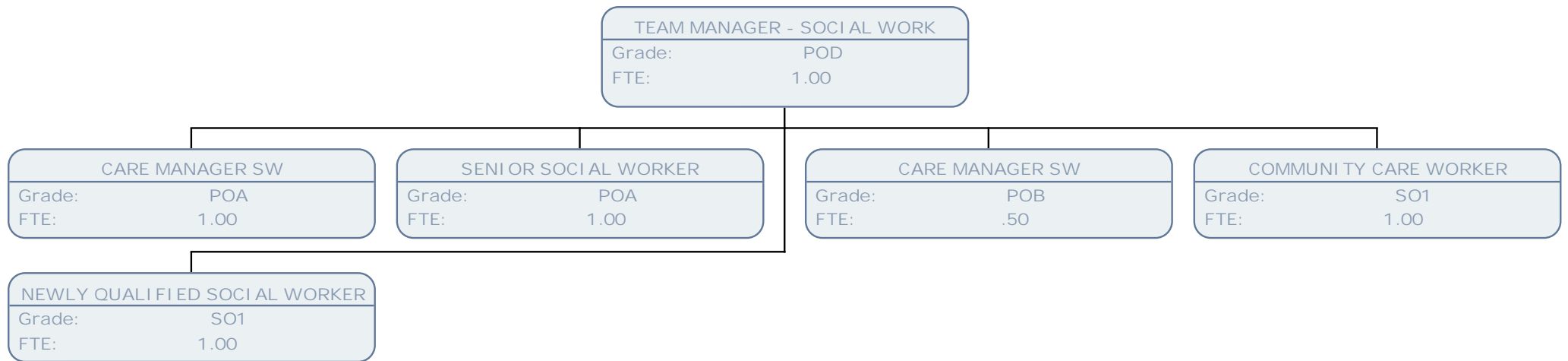










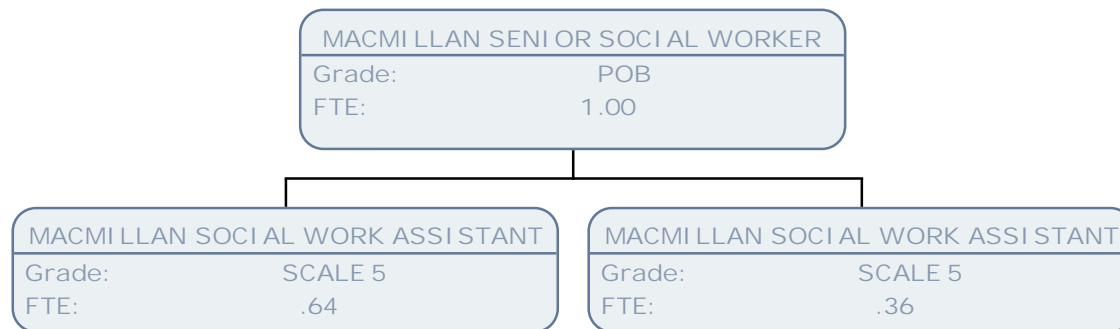


TEAM MANAGER	
Grade:	POC
FTE:	1.00

PALLIATIVE CARE SOCIAL WORKER	
Grade:	SO2
FTE:	.89

MACMILLAN SENIOR SOCIAL WORKER	
Grade:	POB
FTE:	1.00





TEAM MANAGER - SOCIAL WORK	
Grade:	POD
FTE:	.00

COMMUNITY CARE WORKER	
Grade:	SO1
FTE:	1.00

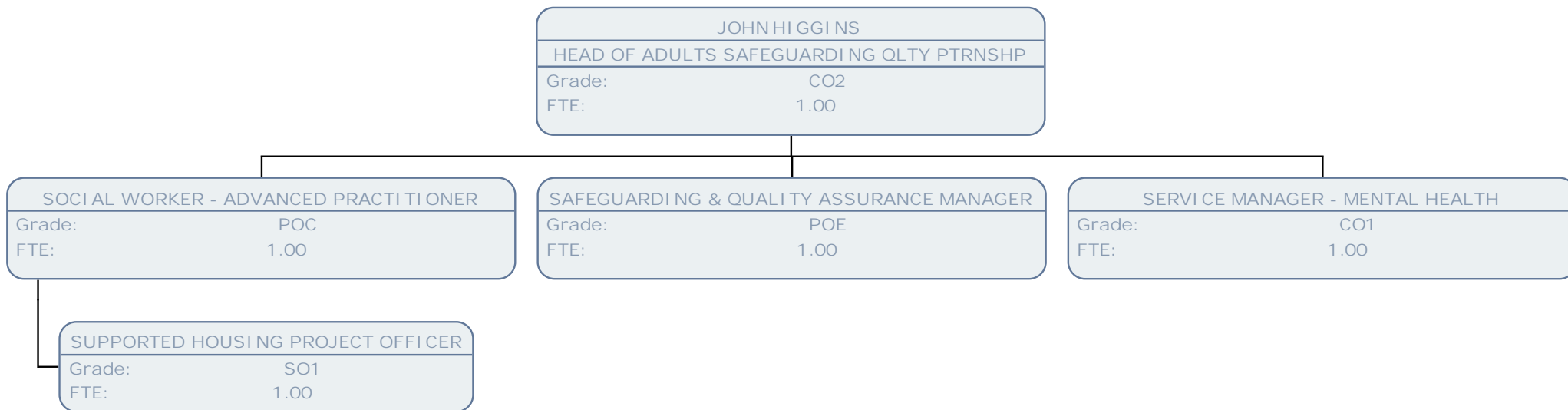
COMMUNITY CARE WORKER	
Grade:	SO1
FTE:	.89

COMMUNITY CARE WORKER	
Grade:	SO1
FTE:	1.00

CARE MANAGER SW	
Grade:	POA
FTE:	1.00

NEWLY QUALIFIED SOCIAL WORKER	
Grade:	SO1
FTE:	1.00





SAFEGUARDING & QUALITY ASSURANCE MANAGER	
Grade:	POE
FTE:	1.00

SAFEGUARDING ADULTS & DOLS CO-ORDINATOR	
Grade:	POB
FTE:	.83

SENIOR SOCIAL WORKER	
Grade:	POB
FTE:	1.00



