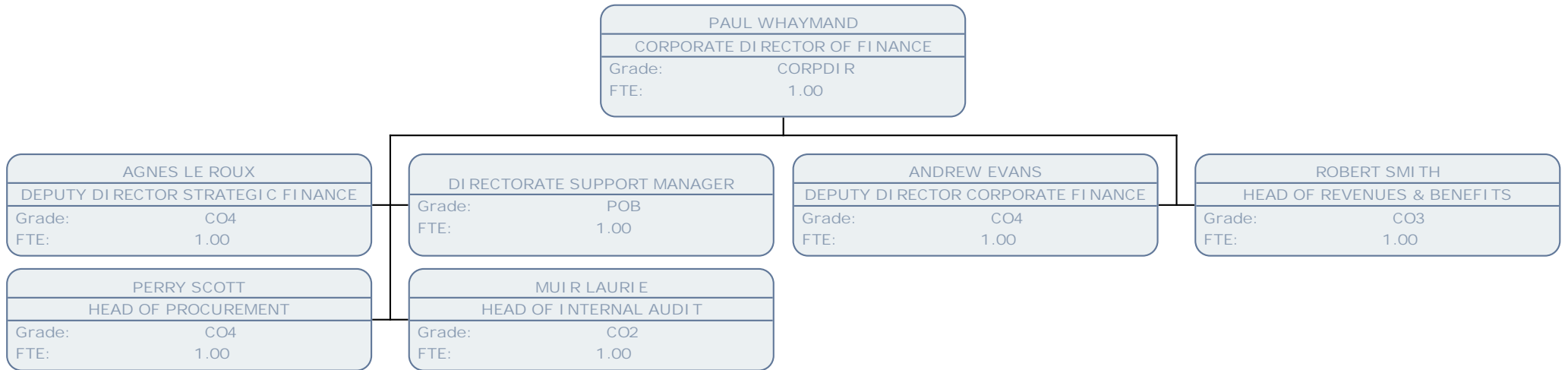
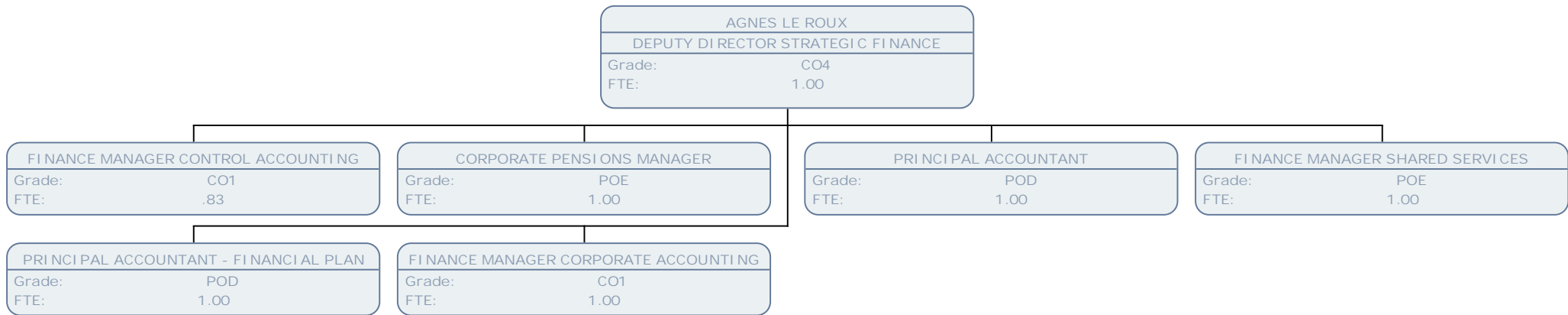
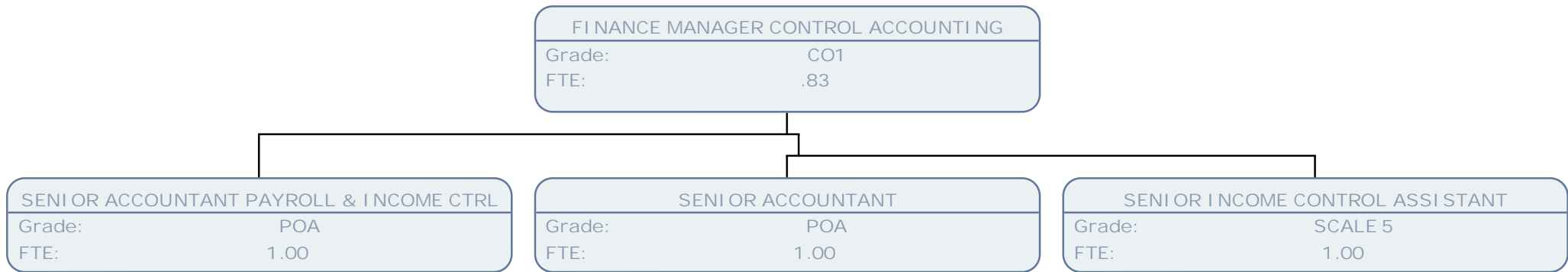


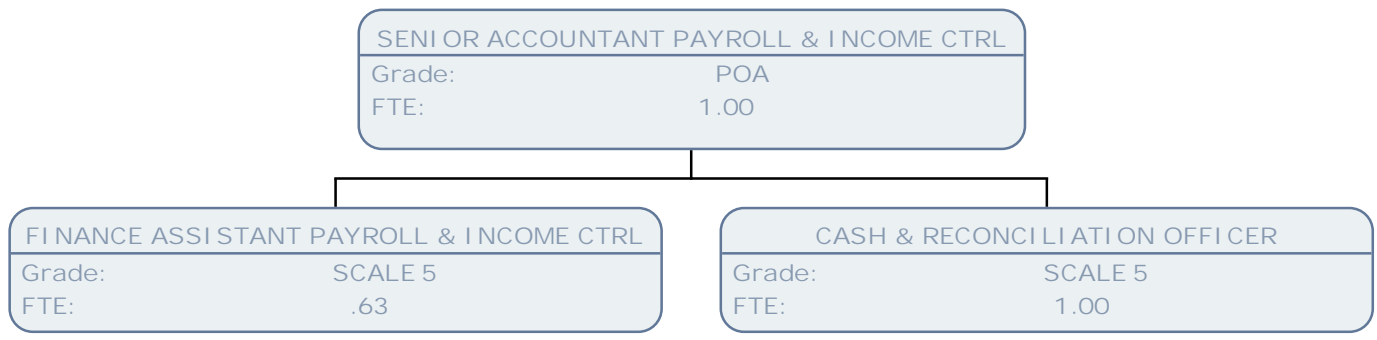
Finance March 14

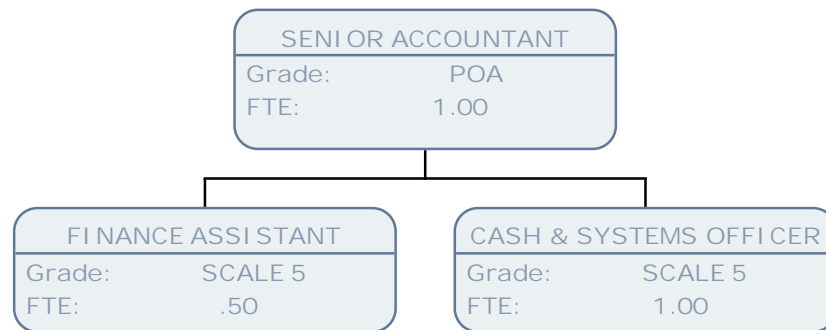
Finance

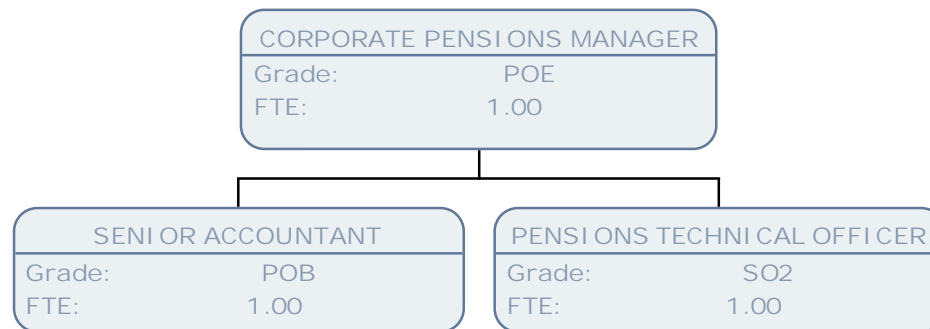


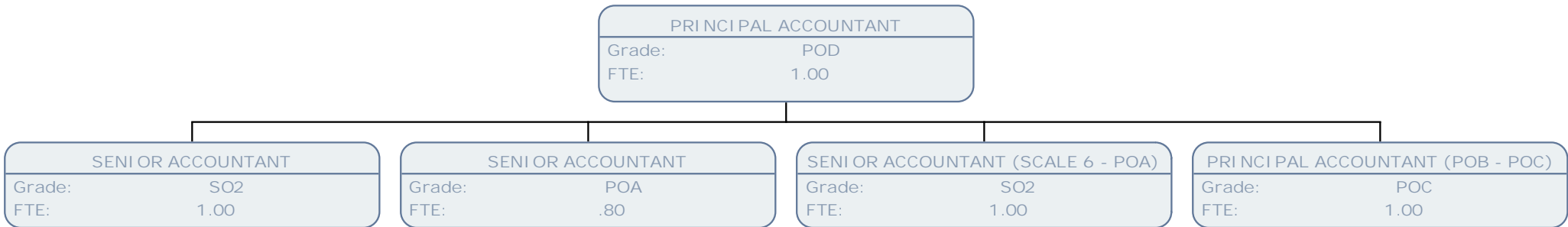


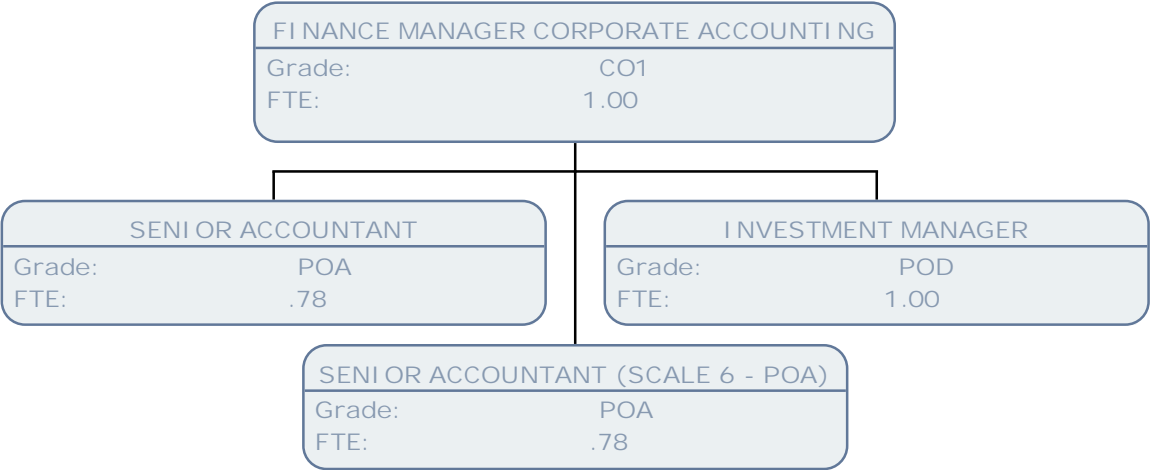


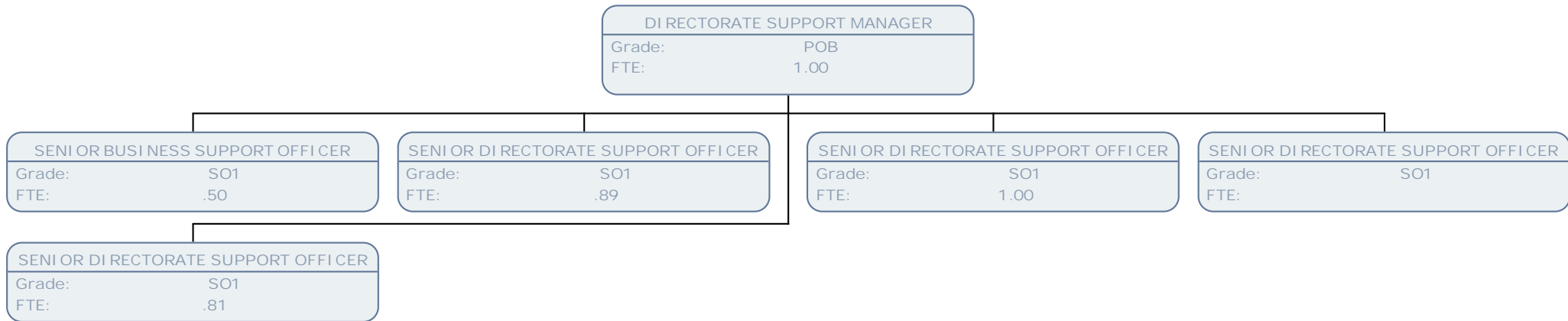


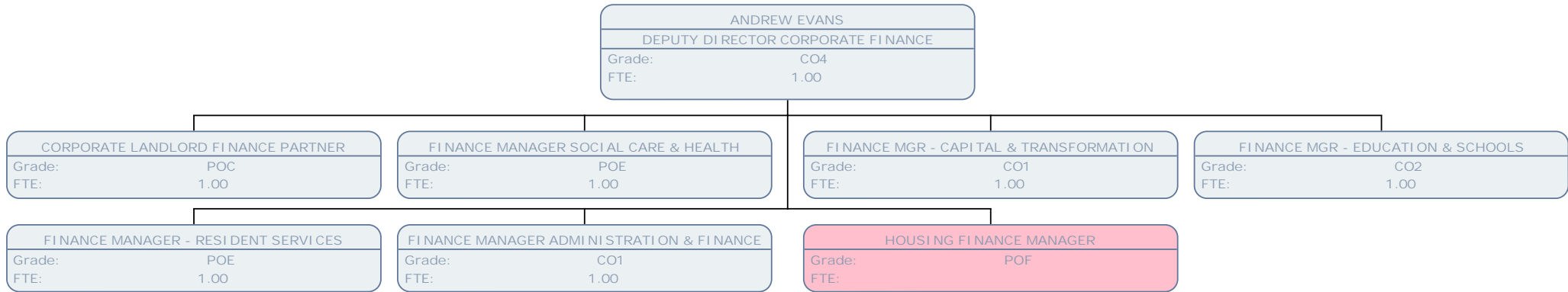










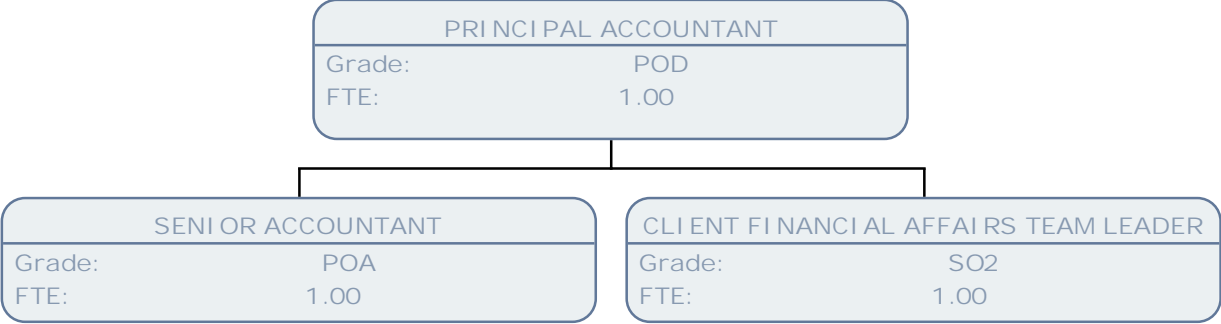


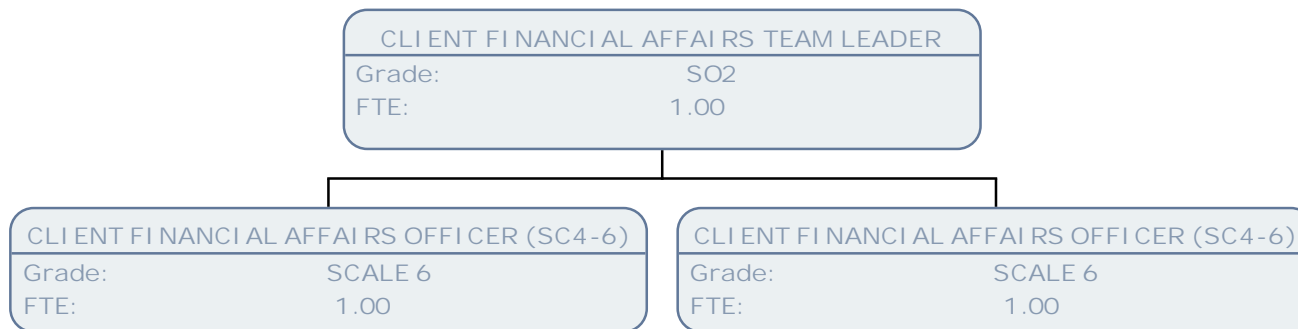
FINANCE MANAGER SOCIAL CARE & HEALTH
Grade: POE
FTE: 1.00

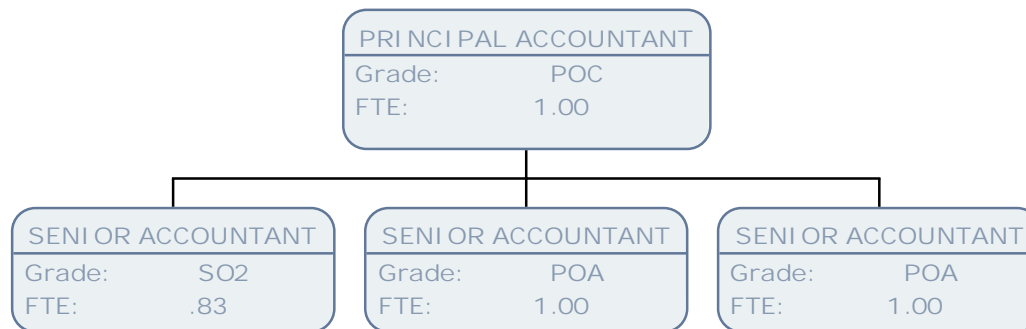
PRINCIPAL ACCOUNTANT
Grade: POD
FTE: 1.00

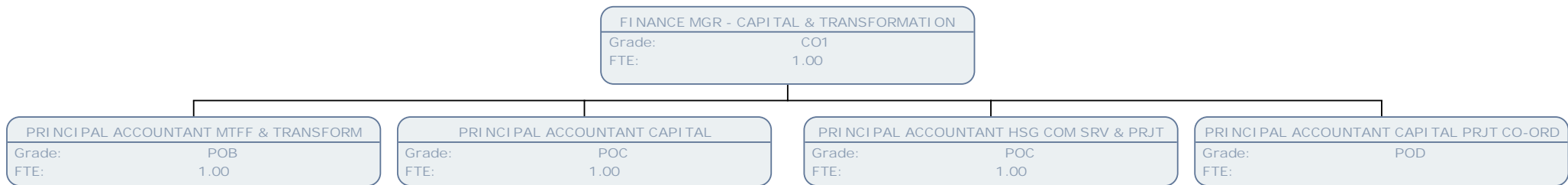
PRINCIPAL ACCOUNTANT
Grade: POC
FTE: 1.00

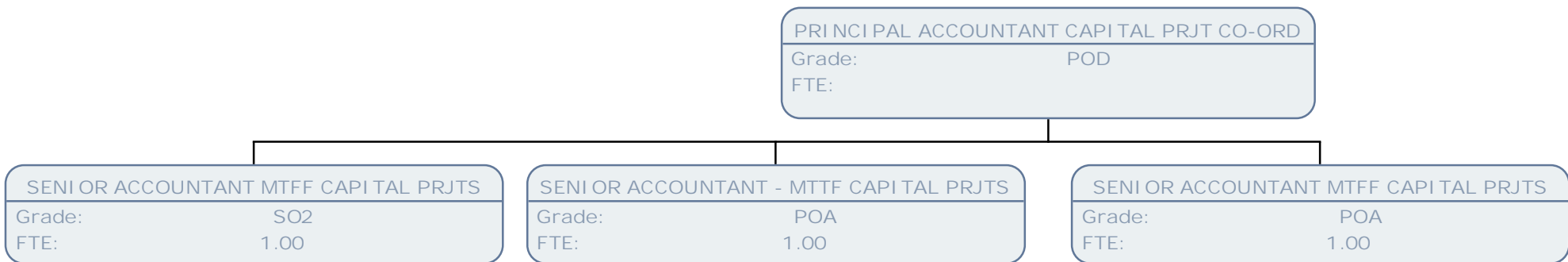


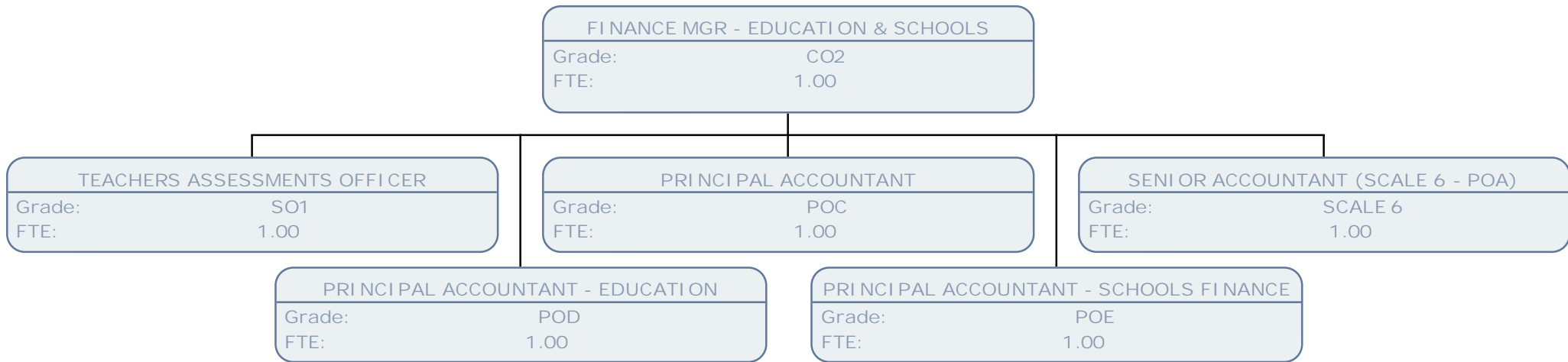


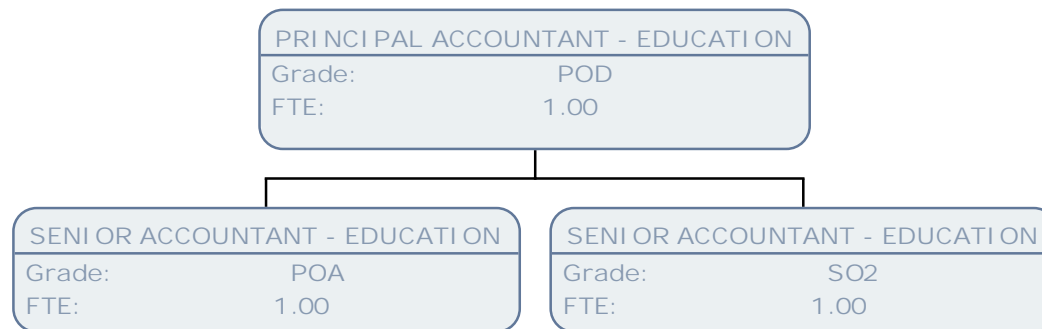


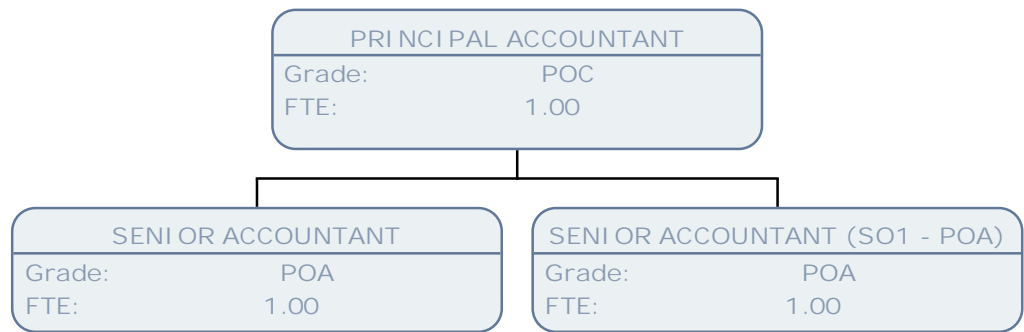


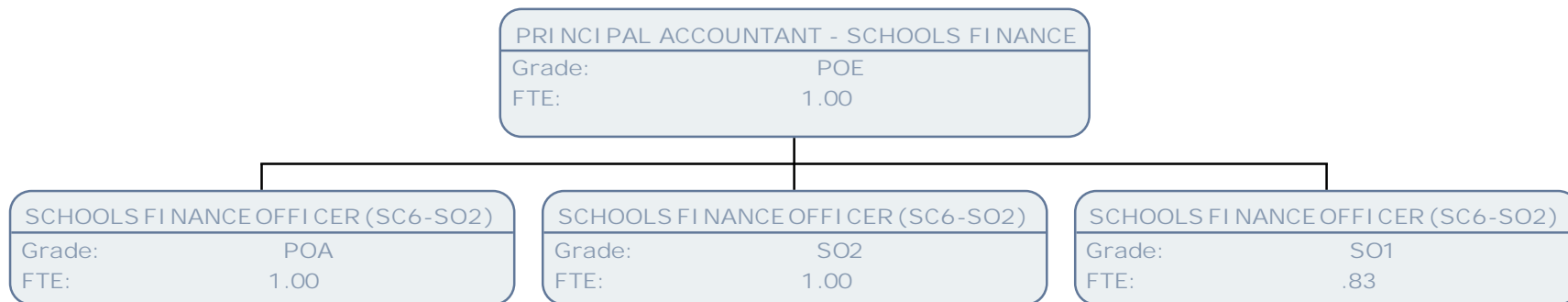


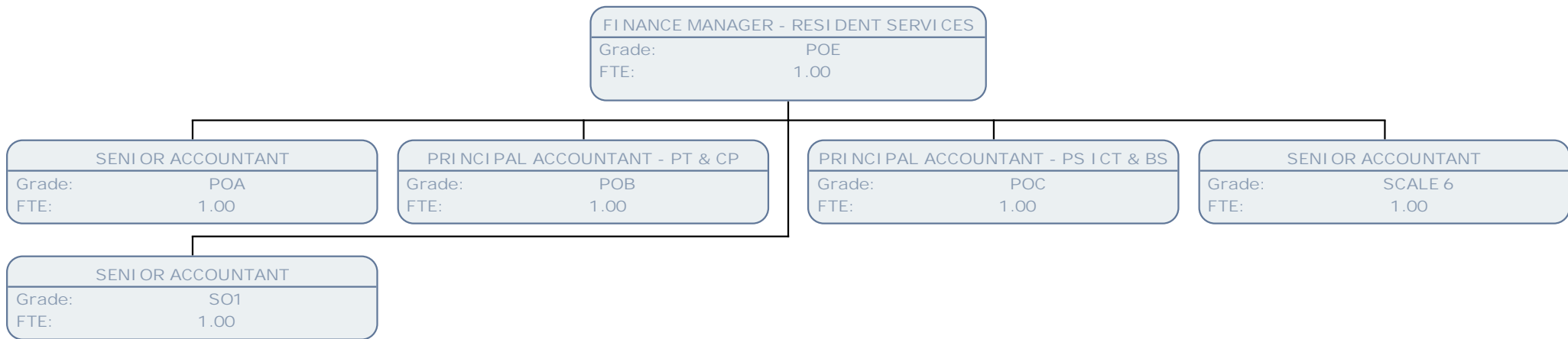


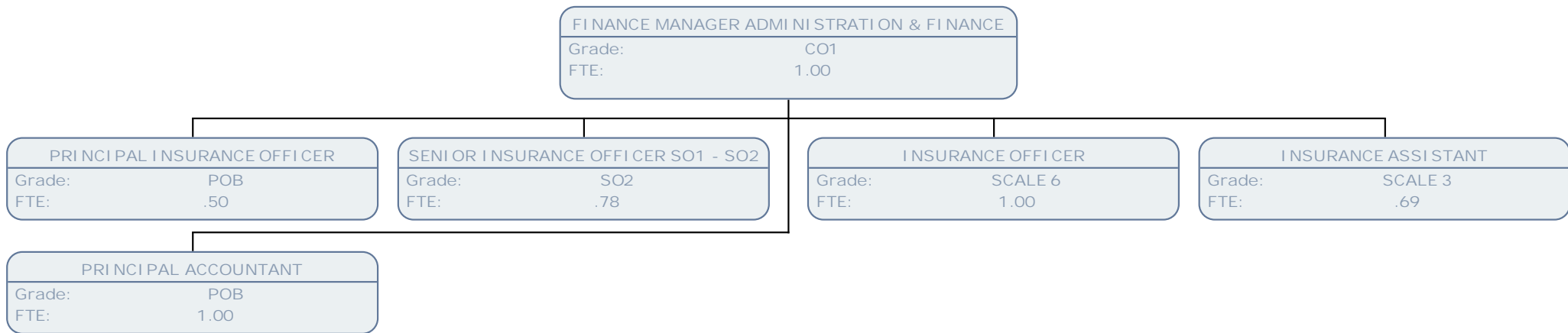


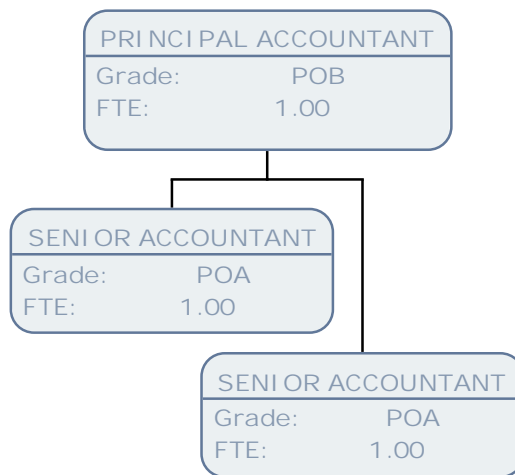


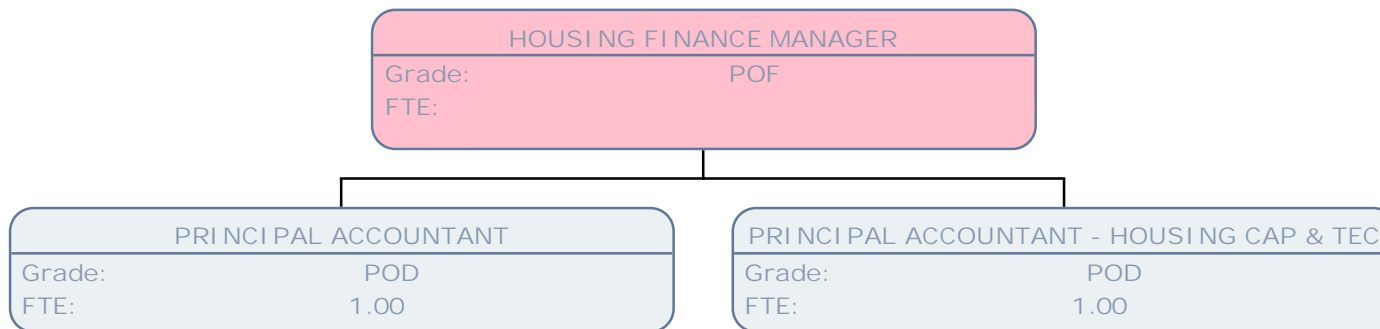


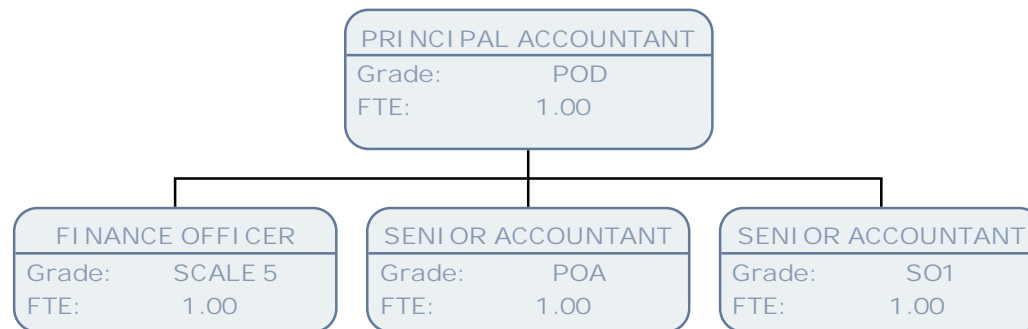


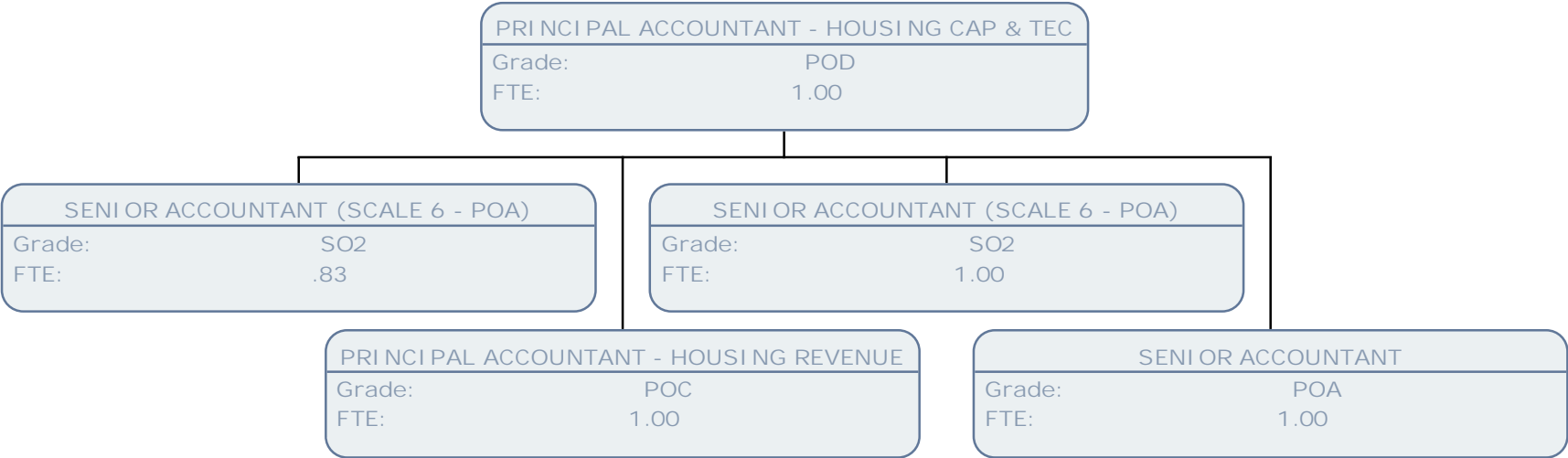


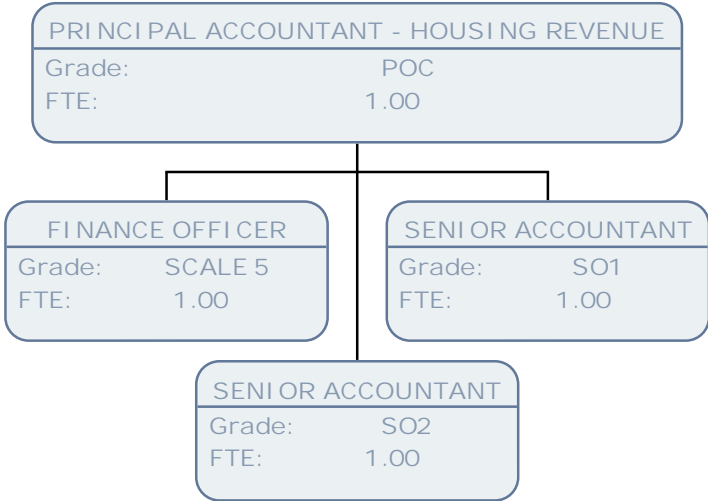


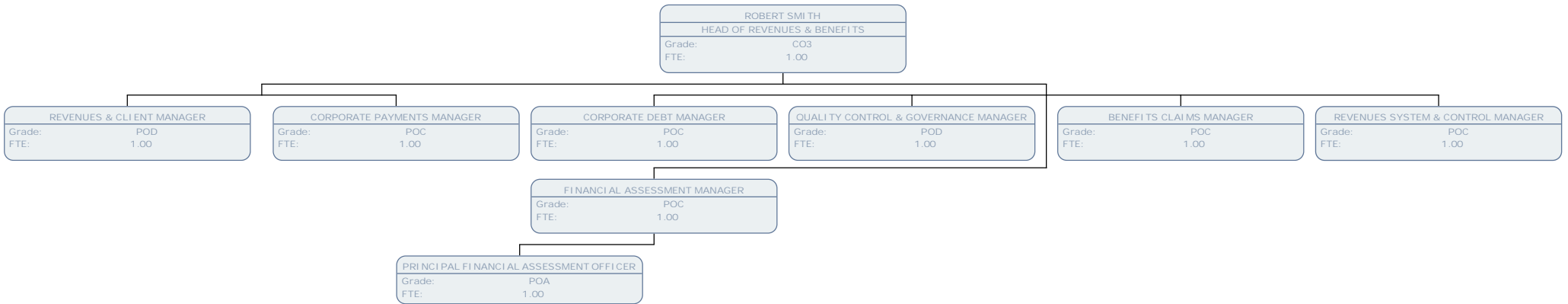


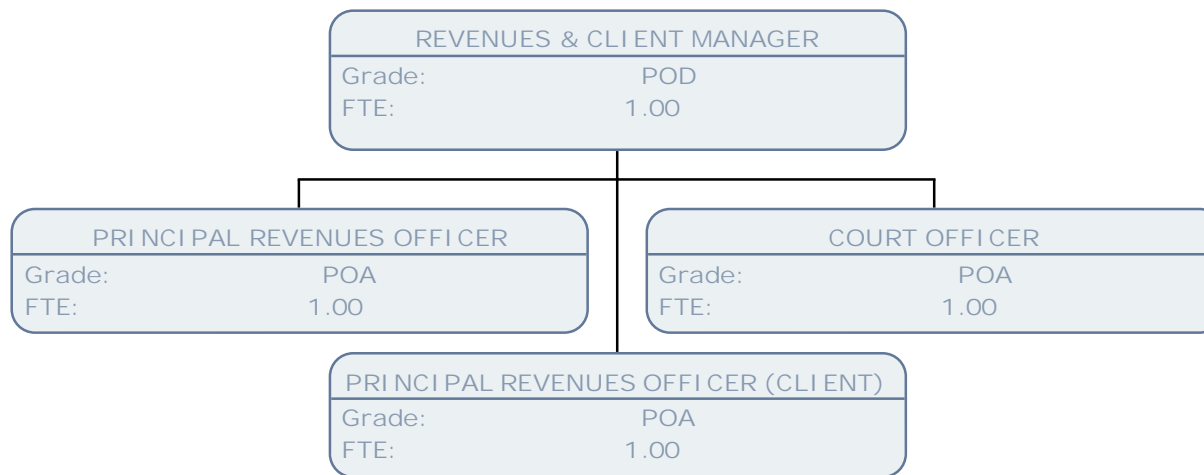


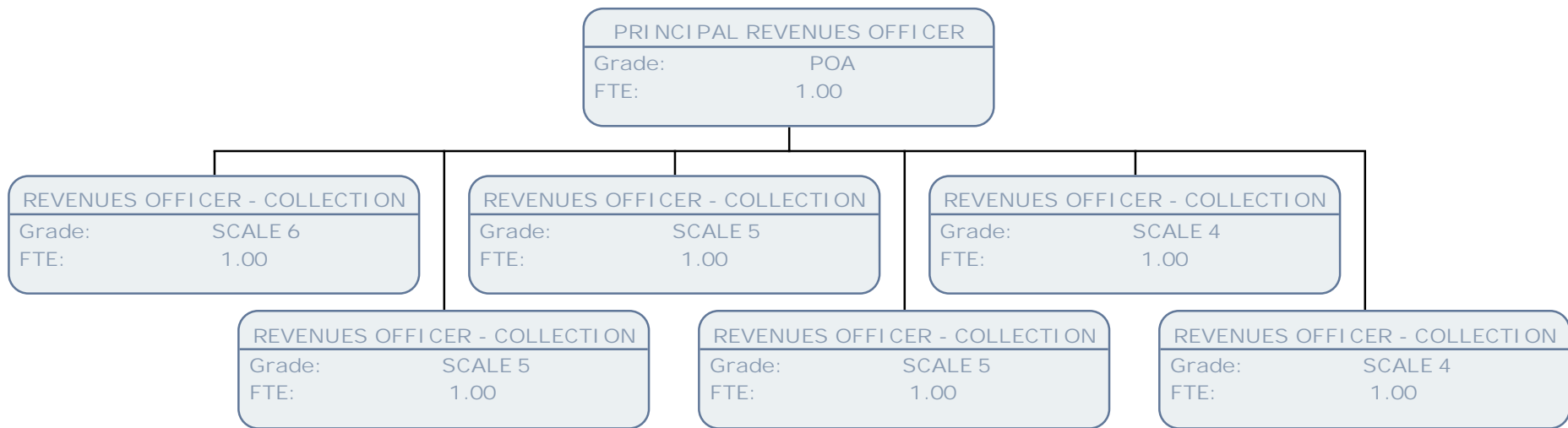


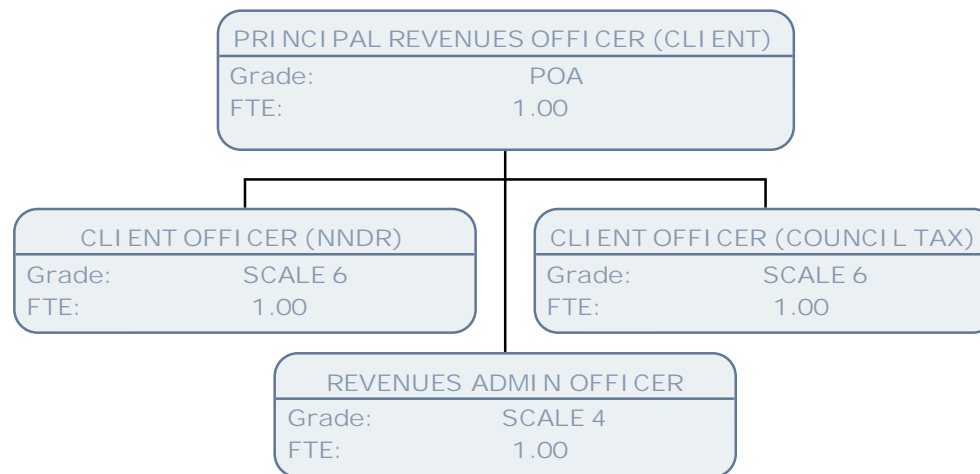


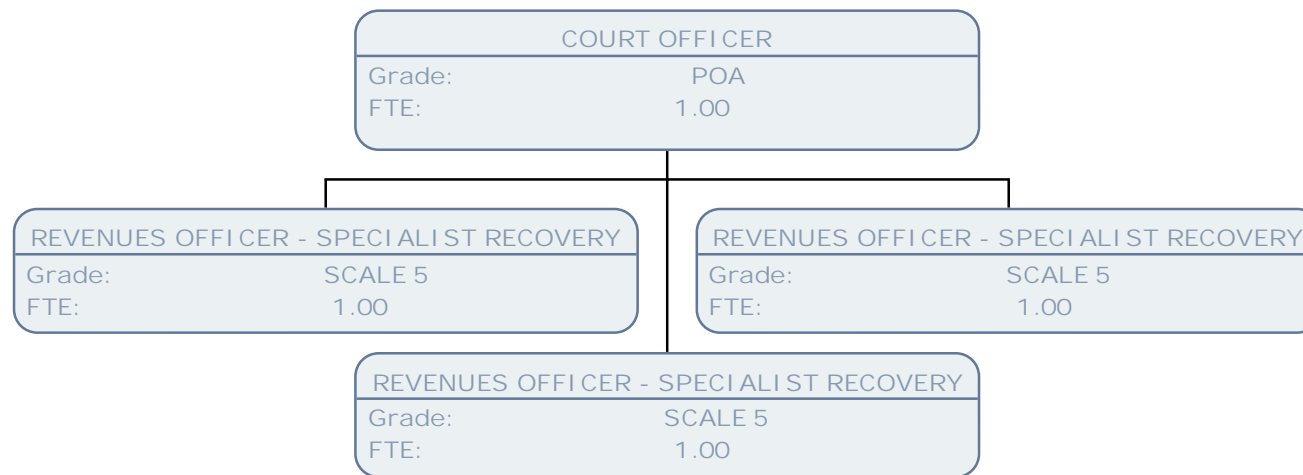












CORPORATE PAYMENTS MANAGER
Grade: POC
FTE: 1.00

PRINCIPAL CORPORATE PAYMENTS OFFICER
Grade: POA
FTE: 1.00

CORPORATE PAYMENTS PROCESSING OFFICER
Grade: SCALE 5
FTE: 1.00

CORPORATE PAYMENTS PROCESSING OFFICER
Grade: SCALE 5
FTE: 1.00

CORPORATE PAYMENTS PROCESSING OFFICER
Grade: SCALE 5
FTE: .67

CORPORATE PAYMENTS PROCESSING OFFICER
Grade: SCALE 5
FTE: .44

CORPORATE PAYMENTS PROCESSING OFFICER
Grade: SCALE 5
FTE: 1.00

CORPORATE PAYMENTS PROCESSING OFFICER
Grade: SCALE 5
FTE: 1.00



