

HILLINGDON people

News from your council
September/October 2024

www.hillingdon.gov.uk

Fostering changes lives

Creating homes

Decarbonising buildings

Investing in parks



HILLINGDON
LONDON



NEW LIBRARY



FAMILY HUBS



SUMMER FUN

Secondary School Admissions

Do you have a child born between **1 September 2013 and 31 August 2014?** If so, you must apply for a school place by **31 October 2024**

For more information, key dates, how to apply and advice, visit www.hillingdon.gov.uk/schooladmissions or email admissions@hillington.gov.uk





www.hillingdon.gov.uk

Contents

September/October 2024

- ▶ **Cover stories**
- ▶ **9 New homes for local people**
Two sites acquired to tackle shortage.
- ▶ **10 Taking action to maintain pavements**
How to apply for a dropped kerb.
- ▶ **12 Decarbonising council buildings**
Making some of our properties more eco-friendly.
- ▶ **16 Foster a child, change a life**
Local couple welcome a child into their home.
- ▶ **20 Looking after children's health**
Initiative improves environments around schools.
- ▶ **23 Uxbridge Library relocation approved**
Read about the enhanced new facilities.

Regulars

- 4 **Hillingdon News** 28 **What's on?**
- 24 **Community** 31 **Contacts**

COVER PHOTO: HILLINGDON RESIDENT RACHEL SLATTERY WITH HER FOSTER CHILD.

We've aligned stories in this magazine to our council strategy to keep you updated on our progress. Below is a key to explain the graphics.

Welcome



Housing provision remains a key pressure and demand continues to put huge strains on local authority resources.

We continue to work hard to address this complex challenge by improving existing homes and creating new properties to ensure our residents have access to high quality and affordable housing.

The council cautiously welcomes the new government's proposals to reform the planning system to create more much-needed housing.

The changes include the formation of a taskforce to accelerate stalled housing development sites, as well as councils being asked to prioritise brownfield and then 'grey belt' land in their local plans.

The council is already a step ahead and delivering vital affordable housing by building on brownfield sites near town centres. This has included repurposing various disused garage or storage sites across the borough, starting to transform two former care sites in Hayes to deliver 34 homes as well as the former swimming pool site in Yiewsley which are both 100 per cent affordable, and more recently, the council purchased the derelict former St Andrews RAF site on Grays Road, Uxbridge for future redevelopment.

While the government's changing of planning laws aims to free up more land for new homes, we believe that stringent conditions will be in place to govern the release of this grey belt land, as well as other new rules requiring that half of the dwellings be designated affordable and for associated new infrastructure and improved green spaces to also be delivered. We will explore all opportunities but ensure we continue to prioritise brownfield sites, and our new local plan will set out how heritage assets and the natural environment will be protected.

In addition to constructing new homes, we are also committed to acquiring more properties for affordable renting. The council increased its target this year from 100 to 300, and during the summer we made further strides towards this through the purchase of high quality, energy-efficient housing, Hyde Park Hayes 3, which will provide 113 social homes. You can read more about this and the RAF Uxbridge site on page nine.

We are also reviewing our social housing allocation policy to address the growing demand for housing support and provide a clearer framework for the prioritisation of applications, ensuring those with strong connections to the borough through the 10-year residency policy and the most vulnerable take precedence. To find out more about this and have your say, see page seven.

I hope you all had an enjoyable summer and had the chance to visit one of our fantastic parks or take part in one of our holiday activities.

Cllr Ian Edwards
LEADER OF THE COUNCIL



Advertising deadline for next edition: **Friday 4 October**

Editorial and advertising enquiries

- ☎ 01895 556903
- @ hillingtonpeople@hillington.gov.uk
- 🌐 www.hillingdon.gov.uk/hillingdonpeople



Published by Hillingdon Council © 2024
Hillingdon People, 3S/05 Civic Centre, High Street, Uxbridge, UB8 1UW.
Design Corporate Communications Printed by Warners Midlands Plc
Products and services advertised in this magazine are not necessarily endorsed by the council.

For a copy in large print or as an audio version call 01895 556903

Learn Hillingdon

Adult Community Education

Learn with us for FREE

Did you know that 97 per cent of our qualification courses are fully funded – meaning there are no fees to pay?

Find out more at www.hillingdon.gov.uk/adultlearning





www.hillingdon.gov.uk

Ruislip business busted selling tobacco from car boot

A crackdown on businesses selling illegal tobacco and vapes continues following a surprise raid of a shop in Ruislip by the council's trading standards team.

Aman Singh and his company Devi Enterprises Ltd, trading as am2pm, 38 High Street, Ruislip, pleaded guilty to nine offences of selling illegal tobacco products at Uxbridge Magistrates' Court on Tuesday 30 July.

Singh and his company were ordered to pay more than £4,000 for selling illegal cigarettes and tobacco without the correct safety packaging and oversized vapes. The products were not intended for the UK market and had no UK duty tax paid on them.

Officers conducted an unannounced inspection of the shop in December 2022. Assisted by a tobacco detection dog, a car outside the shop was identified as containing



tobacco. Following questioning, Singh handed over the keys to reveal a boot full of illicit products including, 920 cigarettes, 750g of rolling tobacco which did not have the required packing and safety warnings, and 69 oversized vapes all above the legal limit of 2ml of liquid.

During a previous visit to the premises in September 2022, officers

had seized and destroyed a batch of 44 illegal vapes.

In total, the court ordered Singh and his company to pay £4,339.94, which included a fine of £1,666, a victim surcharge of £666 and the council's prosecution costs of £2,007.94.

To report a business selling illegal products, email tradingstandards@hillingdon.gov.uk.



Have your say on polling stations

The council is conducting a review of its polling station arrangements used in elections and wants your feedback.

Every five years, we review our polling districts, polling places and polling stations to ensure they are convenient, accessible and cost-effective.

Let us know if you were happy with where you voted at the last election and if you have any suggestions for improvement.

To look at the current arrangements and polling stations and have your say, visit www.hillingdon.gov.uk/polling-districts-review. You can also view them at our libraries and the Civic Centre in Uxbridge and provide feedback by emailing electoralservices@hillingdon.gov.uk or writing to us at Electoral Services, Hillingdon Council, Civic Centre, High Street, Uxbridge, UB8 1UW.

The consultation will close on Thursday 31 October.

Suicide prevention and local support

Every year there are more than 5,000 suicides in England and Wales, with even more people attempting to take their own life.

As part of World Suicide Prevention Day (Tuesday 10 September), the council is working with partners to raise awareness of services and support for anyone struggling with their mental health.

Dedicated support is available for young people aged 10 to 25, which includes help with mental health and wellbeing, advice on education and employment, and access to local services. Services are provided by Kooth, or Young Adult Community Navigation Support in partnership with Central and North West London NHS Trust.

For adults, a range of talking therapies is offered for those who feel anxious, worried, down, and depressed, with the support of a



therapist. A community drop-in service is also available at Hillingdon Cove Café in Ruislip, giving friendly support to those experiencing mental health distress, provided by Hestia in partnership with the NHS.

The council is also encouraging residents to take a free online training course on suicide prevention through Zero Suicide Alliance. Find out more at www.zerosuicidealliance.com/training.

Samaritans' number is also in each edition of this magazine.

Cllr Jane Palmer, Cabinet Member for Health and Social Care, said: "We work with partners to ensure our residents can access services that meet their health, care and support needs. By taking Zero Suicide Alliance's free training, you can make a real difference by learning how to support those in distress, and the vital tools to help someone who's expressed suicidal intentions.

"For anyone who feels that there are issues in their life causing them distress or despair, needs someone to talk to, or has thoughts of suicide, contact Hillingdon Samaritans on 116 123. Their volunteers provide emotional support 24 hours a day and the number can be accessed from any phone."

For more information, visit www.hillingdon.gov.uk/mental-health.

Works gather momentum at West Drayton leisure centre

Building works on the new Platinum Jubilee Leisure Centre in West Drayton are progressing, with completion on track for September 2025.

In May, the council confirmed it is directly managing the remaining delivery of the centre, working alongside multiple contractors to ensure the project moves quickly so residents can soon enjoy the new facilities.

Work to dismantle the scaffolding began in August, revealing the building's visually impressive exterior with attractive brickwork and large windows to let in the maximum amount of natural light.

Inside the building, large areas, such as the sports hall, gym and changing rooms, are beginning to take shape, and the installation of mechanical and engineering systems is underway.



The next phase will see the three swimming pools prepared for plastering and tiling, with high quality finishes applied to the walls and floors to create a sleek and modern look.

Once complete, the leisure centre will host a range of facilities with swimming pools for all ages and

abilities, a climbing wall, gym and fitness classes, soft play area and a rooftop football pitch.

Find out more and take a tour of the site at www.hillingdon.gov.uk/platinum-jubilee-leisure-centre.



Christmas card design competition



Last year's children's winner Benjamin Rozario-Dalton

Our popular annual Christmas card competition is back, and once again we're inviting you to unleash your creativity for a chance to have your artwork showcased on our corporate cards.

Residents of all ages can enter. Simply submit a festive image related to the borough, supplied as either a jpeg or pdf attachment (not embedded in the body of an email).

Your design can be either portrait or landscape but must be high resolution (at least 300dpi and 216mm by 154mm in size). Only one entry per person is permitted.

The artwork can be a photograph, painting or drawing. Remember to consider how your design will look when scanned, as glitter and some other collage materials can lose their effect.

Email your entry to christmascardcomp@hillingdon.gov.uk by 5pm on Friday 1 November, after which winners will be selected by Leader of the Council, Cllr Ian Edwards.

For more information, visit www.hillingdon.gov.uk/christmas-card.

Centre marks anniversary milestone



Council staff, centre users and their families enjoy the celebrations

Last month, the council's Queens Walk Resource Centre in South Ruislip, which provides valuable support to adults with learning disabilities and complex needs, celebrated its tenth anniversary.

On Wednesday 14 August, centre users, their families and staff enjoyed a special party to celebrate the milestone.

Guests enjoyed a sing-a-long show, Summer Frolics, with the Rah Rah Theatre, refreshments and games, including snakes and ladders and hook-a-duck. There was also an exhibition of artwork created by centre users, and a display on the history of Queens Walk.

Since 2014, the day centre has expanded its range of activities to cater for residents with various learning and physical disabilities. It provides both group and individual care through a diverse and flexible programme.

The centre has several rooms that stimulate creativity and self-expression, such as music, art and interactive rooms. It also has a hydrotherapy pool, health and wellbeing room, activities studio, sensory garden, and teaching kitchen. These facilities help residents improve their communication, mobility, and life skills in a fun and social way.

Cllr Jane Palmer, Cabinet Member for Health and Social Care, said: "Queens Walk provides valuable, personalised support to those residents who need it most, helping them to live healthy and active lives, and at the same time providing respite for their families.

"We're proud of its achievements and growth during the past 10 years which is testament to the hard work of our staff."

Find out more at www.hillingdon.gov.uk/queenswalk.

Council rescues and rehomes at-risk horses

In partnership with World Horse Welfare and Royal Veterinary College (RVC) vets, the council has rescued 14 neglected horses from a field in Harefield.

Residents alerted the council after noticing the malnourished herd frequently straying onto nearby roads, Breakspear Road North and Fine Bush Lane, creating a hazard.

Despite attempts to find the owners to secure the fencing, the horses kept escaping, prompting an animal welfare investigation by the council.

Following the death of one horse due to poor conditions, the council, aided by RVC, World Horse Welfare, and the RSPCA, took the remaining horses under the Animal Welfare Act.

The council has specific powers to intervene in circumstances where an animal is in distress, and World Horse Welfare was able to provide transport, specialist veterinary care and experienced handlers to rescue them.

On Tuesday 28 May, Uxbridge Magistrates' Court awarded the council custody of the horses, and



they are now thriving under World Horse Welfare's care.

Becky Bedson, Field Officer for World Horse Welfare, said: "The horses are now being cared for by our expert team at our rescue and rehoming centre and their future is really bright. We wouldn't be able to do this work if it wasn't for the public reporting welfare concerns to us."

To report at-risk horses, visit www.worldhorsewelfare.org.

What's next after GCSEs?

The council's Post 16 Prospectus for 2024/25 is out now, providing information on options for young people following their GCSEs.

It contains details on the courses available from Hillingdon's schools or colleges, apprenticeships and choices for studying part-time while working.

It also includes a video explaining the various options and information for young people with special educational needs and disabilities (SEND).

The interactive guide can be used alongside support from the child's school or college, a careers advisor, and other professionals who they may talk to about their future.

A post 16 brochure has also been created specifically for young people with SEND, designed by young people with SEND in Hillingdon. The accessible guide explains options available locally and details of the council's own supported internships.

Cllr Susan O'Brien, Cabinet Member for Children, Families and Education, said: "These two online publications are full of practical information, useful tips, and key contact details to help young people decide on the best path for their future."

Access the Post 16 Prospectus at www.hillingdon.gov.uk/post-16-prospectus and the SEND brochure at www.hillingdon.gov.uk/send-post-16.



More education places for Hillingdon children with SEND



More than 70 vital new places for pupils with special educational needs and disabilities (SEND) have been created by the council through the sale of the former Barra Hall children's centre site in Hayes.

Following the successful launch of the fully integrated family hub in Hayes, for local families with children up to the age of 19 (25 with SEND), the former manor house building had been vacant since February.

On Thursday 25 July, the council's Cabinet agreed to sell the site to Harrow, Richmond, and Uxbridge

Colleges (HRUC) for the provision of more school places for pupils with SEND.

As part of the wider expansion of Uxbridge College, HRUC intends to refurbish the building into a facility for special educational use for young people over the age of 16. It will help expand the college's overall provision for pupils with severe and moderate learning disabilities and is planned to open in September 2025.

The sale also ensures the Grade II listed building is safeguarded for the future and remains a key asset

to the local community and beyond, while delivering a considerable cost saving for the council.

The facility will increase local placements available for post-16 students with SEND and cater for a range of needs. As part of its Dedicated Schools Grant 'safety valve' agreement with the Department for Education, the council is focused on making best use of local provision rather than relying on independent placements and is aiming to reduce the numbers of pupils moving to independent non-maintained special schools due to the high cost of placements.

Cllr Jonathan Bianco, Deputy Leader and Cabinet Member for Property, Highways and Transport, said: "Ensuring households are thriving and young people across the borough have access and opportunity to quality education are key council priorities."

"The sale of this site is a real positive for everyone, providing essential SEND learning places, raising vital revenue for the council and saving taxpayers' money, as well as protecting a building of significant value."

Find out more about the council's support for SEND children and families at www.hillingdon.gov.uk/SEND.

Could you be a parent champion?

If you are a parent who wants to help other families in your community, you might be interested in volunteering for the council's Families' Information Service.



Parent champions Zamurd and Khatera

Parent champions are an important liaison between council staff and parents in the local area and provide families with information about council services, including early years childcare and advice and support for children with special educational needs and disabilities.

Zamurd, a parent champion from Hayes, said: "I meet other parents to talk to them about the childcare options available, or share information about activities and events in the area. I like being able to share my experiences with others and signpost them to services that could help them. It's good to meet other people and has built my confidence. It's a flexible role, and we receive ongoing training and regular catch-ups."

Volunteers will need to be able to spend a few hours a week liaising with parents and listen to any worries or concerns they may have. All volunteers receive ongoing support from a dedicated parent champion coordinator at the council.

The parent champion role requires confidentiality to protect family information, and all volunteers will be subject to a Disclosure and Barring Service (DBS) check.

To apply, visit www.hillingdon.gov.uk/parentchampion.

Have your say on draft Social Housing Allocation Policy

The council wants to hear your opinions on its updated Social Housing Allocation Policy, which decides how council and housing association homes are advertised and allocated.

With the increase in demand for housing support, the policy will provide the council with an up-to-date framework to determine prioritisation of applications.

The key changes proposed are:

- increasing the number of priority bands to make the priority order for rehousing clearer
- reducing the number of additional priority categories
- giving increased priority to some of the most vulnerable residents
- allowing more overcrowded households to bid for properties below their assessed need.

The consultation will run until Sunday 13 October. To view the draft policy and respond, visit www.hillingdon.gov.uk/social-housing-consultation.



Cllr Eddie Lavery, Cabinet Member for Residents' Services, said: "We are determined to ensure residents live in safe and strong communities and that we take measures to prevent homelessness. The proposed changes to our Social Housing Allocation Policy will ensure it is equipped to tackle the currently challenging housing landscape."

"We welcome the views of all residents to shape this to ensure the allocation of homes is efficient and

increased prioritisation is given to those with strong connections to the borough, severely overcrowded households and the most vulnerable.

"Despite our work to rapidly increase our housing stock, the escalating demand for support means that we do not have enough homes for everyone on our housing register and action must be taken to carefully examine how they are allocated."

ANPR parking technology tested

In July, the council trialled the use of a new vehicle fitted with Automatic Number Plate Recognition (ANPR) cameras to clamp down on unauthorised parking.

During the trial, anyone parking in one of the council's parking management schemes without the correct permits or exemptions faced enforcement action.

The new technology allows Civil Enforcement Officers (CEOs) to carry out more checks across a wider area in less time. The ANPR cameras, linked to the council's parking permit database, highlight potential parking contraventions to the CEOs, who can then follow up with a manual verification and check for valid parking approvals, such

as visitor permits and blue badges. Not all alerts resulted in a Penalty Charge Notice.

The results of the trial will be analysed before the council makes a final decision on further implementation of the vehicle across the borough.

Cllr Eddie Lavery, Cabinet Member for Residents' Services, said: "The trial was a fantastic way to maximise officer time in cracking down on those who fail to follow our parking restrictions and ensure that parking remains accessible and fair to residents with valid permits within their neighbourhoods."

For more information about parking, visit www.hillingdon.gov.uk/parking.



The council's ANPR enabled vehicle

Warning to stay alert to parking scams

The council has received reports of people posing as parking Civil Enforcement Officers (CEOs) in the borough and cloning bank cards by asking motorists to pay an on-the-spot fine using a card reader.

Residents are reminded that the council's CEOs (traffic wardens) wear a green uniform with Hillingdon and APCOA logos and ID numbers displayed on their shoulders (pictured right). Please note that APCOA environmental enforcement officers wear black uniforms. They will never take payment at the roadside.

In June, another scam involving a fake QR code on a TfL PayByPhone parking meter at Ickenham Station car park was also reported.

The council does not use QR codes for payment at its car parks and residents are encouraged to download the PayByPhone app to their mobile.

The police are investigating all incidents and urge anyone who has been a victim of these scams to report it at www.actionfraud.police.uk or by calling 0300 123 2040.



Man sentenced for harassing traffic warden

A man who shouted and swore at a council traffic warden and blocked his car with his vehicle was given a community order in June.

The incident happened in Warley Road, Hayes, in January, when the Civil Enforcement Officer (CEO), was issuing a Penalty Charge Notice to a vehicle that had parked illegally on the pavement.



The driver followed the CEO to his car and repeatedly prevented him from leaving while using abusive and threatening language. The police arrived and arrested the driver.

On Friday 28 June, at Uxbridge Magistrates' Court, Tahir Usman from Hayes, pleaded guilty to the use of threatening, abusive, insulting words and behaviour with intent to cause fear of/provoke unlawful violence.

He was sentenced to 120 hours of unpaid work in the local community, and ordered to pay £199 in court costs and £100 in compensation to the CEO.

Cllr Eddie Lavery, Cabinet Member for Residents' Services, said: "This case shows that we have a zero-tolerance approach to any form of assault on our CEOs, who carry out a difficult job in the borough. They are ultimately doing their job to tackle illegal parking which causes a nuisance to law abiding residents and, in some cases, can cause a risk to safety."

"We will always report such incidents to the police and pursue convictions, so I encourage residents to treat them with respect."

New homes for local people



HIGH QUALITY HOMES Hyde Park Hayes 3

The council is taking innovative steps to tackle the housing shortage by acquiring new sites for affordable housing.

In July, the council completed the purchase of two sites in Uxbridge and Hayes to provide hundreds more much-needed affordable homes for residents.

The sites will help the council prevent homelessness, reduce the housing waiting list, and create new homes of varying sizes.

The locations include Hyde Park Hayes 3, commonly known as HPH3 Hayes, on Millington Road, which will immediately provide 113 high quality and energy-efficient social homes, and the former St Andrews RAF residential site on Gray's Road, Uxbridge which has future development potential.

HPH3 Hayes was acquired with the support of Greater London Authority funding and will enable residents at risk of homelessness, currently living in high-cost temporary accommodation, to move into more sustainable properties alongside eligible residents on the council's housing waiting list.

The site also provides future residents with extensive car parking

and cycle storage facilities and development opportunities for the council to increase the number of homes available.

In Uxbridge, the council has secured land, previously used by the Ministry of Defence to house serving personnel, for future redevelopment. Currently consisting of 89 derelict homes built between the 1920s and 1950s, the council will now explore plans to transform the area and provide new affordable homes ranging from one-bedroom properties to large family-sized homes, subject to planning permission. Some will be available on the open market while the rest will be rented at London affordable rent.

The developments will form part of the council's commitment to address housing shortages by purchasing 300 homes for 2024/25, and a wider three-year plan to deliver 500 additional homes.

Cllr Eddie Lavery, Cabinet Member for Residents' Services, said: "We are taking innovative steps to tackle the shortage of housing, reduce the cost of, often expensive, nightly accommodation, and both these sites pose great opportunities for the council."

"HPH3 Hayes allows us to immediately reduce our housing waiting list, while RAF Uxbridge is an exciting long-term opportunity to restore a historic site, which has not been in use since 1990 and had become a local eyesore, as well as boosting footfall to the town centre."



The former St Andrews RAF residential site



Find out more about housing support at www.hillingdon.gov.uk/housing



Do you have questions about how to apply for a vehicle crossover to improve access to your property? In this feature, we answer some of your most common dropped kerb queries.

Driving across pavements and verges can cause considerable damage to the pavement, underground pipes and cables, and vehicles.

A dropped kerb/crossover strengthens the pavement and prevents such damage.

It's illegal to drive over grass verges or pavements unless a dropped kerb is in place. They offer safe, off-road parking and could add value to your property. Below are your most asked questions answered.

Do I need planning permission?

In most cases no. However, permission is needed if your property has a frontage directly on a classified road, is a listed building, is not in use by a single family (eg. flats), the works include the demolition of a front wall taller than one metre, or if the parking area within the site does not meet minimum requirements for drainage.

Before applying what else do I need to know?

- 1 Legally installed crossovers are part of the public highway, and the council is responsible for the maintenance at no cost to the occupier unless heavy vehicles illegally use the crossing and cause damage. Should this happen, the occupier is responsible for paying for repairs.
- 2 A standard crossover typically comprises of three dropped kerbs (2.7 metre flat section) with two tapers. Crossover extensions must not exceed five metres in total flat width.
- 3 Crossovers extending across the full width of the property frontage are not allowed. Up to 50 per cent of the frontage width is allowable in some circumstances where the frontage width exceeds 10 metres.
- 4 One occupier should act on behalf of both parties when two adjoining properties wish to build a double width crossing to serve both sites.
- 5 Only one crossover will be permitted per property.
- 6 The applicant must erect a low (less than one metre) wall, fence or permanent landscaping to physically prevent vehicles crossing over an area of the footway that has not been strengthened.
- 7 Residents must retain/provide 25 per cent of soft landscaping in their front gardens, and/or adequate drainage to prevent water running onto the highway.

Can I get any builder to install a crossover/dropped kerb?

Only the council is permitted to construct residential crossovers/dropped kerbs in Hillingdon.

Can I choose what kind of material is used?

The standard finish is either tarmac or concrete and will be decided by the council.

How much will it cost?

The cost can vary depending on the size of the area and any obstructions

that may need to be repositioned, such as utilities, lampposts and parking bays. A council officer will need to visit the site first before providing an estimate. Costs for standard size crossovers can be between £1,500 and £2,000 (on average), and a non-refundable £124 administration fee is also charged for all applications. There is no provision for paying in instalments.

If the proposed crossover is within a footway improvement scheme (applicants will be advised of this), the crossover can be constructed at a 50 per cent discounted rate. If you, or a household resident, has a substantial and permanent disability and have trouble accessing your home, you may be eligible for financial assistance towards a crossing. Contact Social Care Direct on 01895 556633 or email socialcaredirect@hillingdon.gov.uk.

How will my crossover/dropped kerb application be reviewed?

We will review the application and an officer will mark the pavement/kerb to show the extent of the new or extended crossover. Markings do not constitute approval. You will then be provided with a quote for the construction. If you're happy with your quote, you will need to return an acceptance form and once we approve your dropped kerb application we can then begin the works.

Where can I read more about this and apply?

Before applying visit www.hillingdon.gov.uk/dropped-kerb-apply and

read our domestic vehicle footway crossover policy.

How can I report someone for regularly driving over/ causing damage to a pavement or verge, or someone who does not have a legally installed crossover/ dropped kerb?

Report any incidents by visiting www.hillingdon.gov.uk/pavement-damage. The council takes all reports of people driving across and causing damage to pavements or constructing crossings without permission and via external contractors extremely seriously.

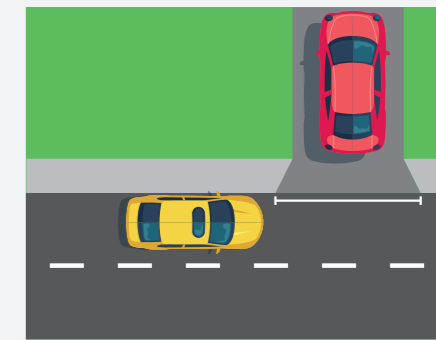
If we find that there is a breach of the Highways Act, a notice can be served to cease driving over the pavement and to apply for a crossover. Failure to comply can result in the installation of bollards to protect the pavement from further damage, and can also result in prosecution, carrying a maximum fine of £1,000. Any costs incurred by the council in repairing damage to a pavement or verge can also be passed on to the owner or occupier of the property concerned.

An inconsiderate motorist is blocking my crossover/dropped kerb by parking in front of it – what do I do?

Once you have had your crossover/dropped kerb installed you will need to register your dropped kerb. You can do this for free at www.hillingdon.gov.uk/dropped-kerb-enforcement. If you have registered and you find that your dropped kerb or access to your

crossover is blocked, call the council's parking enforcement hotline on 01895 271 418 and an enforcement officer will visit.

Any vehicle found parked in contravention will be issued with a parking ticket. You may also apply for a white bar marking, currently £197.50 to deter inconsiderate parking.



Cllr Jonathan Bianco, Deputy Leader and Cabinet Member for Property, Highways and Transport,

said: "There are more than 735 miles of pavements in Hillingdon, and it's the council's responsibility, as the local highways authority, to make sure that they are maintained and safe for everyone to use.

"In recent years, we have seen a rise in people illegally driving over pavements to gain access to their properties, resulting in unnecessary maintenance, as well as posing a health and safety risk.

"This can prove costly, with significant funding destined for routine resurfacing needing to be diverted to be spent on repairs.

"That's why we're encouraging residents to explore whether they are eligible to apply for a dropped kerb.

"Where appropriate, the council will continue to take enforcement action once offenders are identified."

For more information about vehicle crossovers and dropped kerbs, visit www.hillingdon.gov.uk/dropped-kerb-apply



Important milestone reached in decarbonisation programme

The council is delivering an ambitious project to decarbonise some of its largest buildings using innovative technology and renewable energy sources.



LIFT-OFF Heat pumps being installed at the Civic Centre

In July, a crane was in operation at the council's Civic Centre in Uxbridge where it lifted 10 one-tonne 'Thermanova' air source heat pumps onto the roof of the Grade II listed building. The council has received £13.75 million from the government's Public Sector Decarbonisation Scheme towards its decarbonisation programme - the largest grant in the capital. The scheme is run by the Department for Energy Security and Net Zero and delivered by Salix. The installation contributes to the council's ambitious decarbonisation project, which will substantially reduce carbon emissions across several of its largest buildings.

The works, which include measures such as the installation of air source heat pumps and solar panels, are projected to lead to £190,000 of energy savings per year, 1,000 tonnes of carbon dioxide savings annually and the generation of 17 kilowatts of power. Works are already well underway to install heat pumps at the Civic Centre in Uxbridge and at Hillingdon Sports and Leisure Complex. Some of those heat pumps are 'Supanova' models, among the largest in the country and around the same size as a shipping container. The council is the first to be installing these as part of its carbon reduction programme. Further works are taking place at Highgrove Pool and Fitness Centre, in

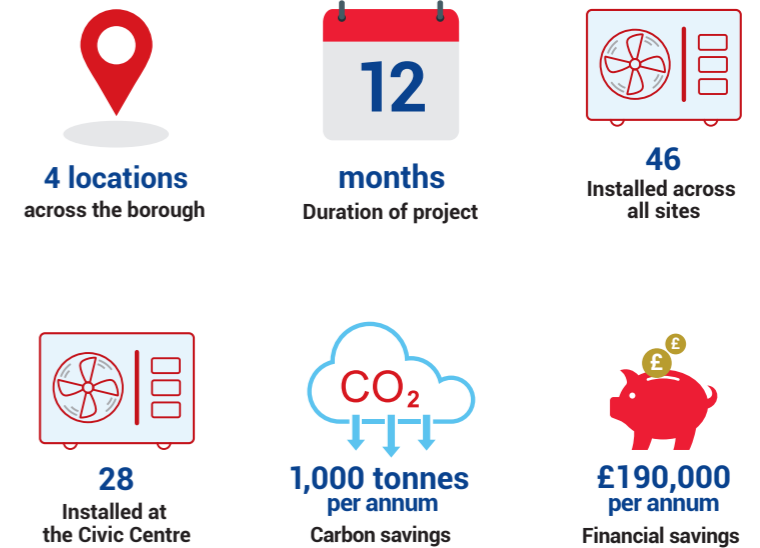
Ruislip, where the improvements also include installation of secondary glazing, cavity wall insulation, loft insulation, improved ventilation and LED lighting. Modifications to the Winston Churchill Theatre in Ruislip were completed earlier this year and the building is now currently running at net carbon zero. Works at the two leisure centres are expected to be complete by October and the Civic Centre should be finished by November. At the Civic Centre, a total of 28 air source heat pumps are being installed across the site, and the four main gas-powered boilers are being removed to allow for more efficient temperature control throughout the building.

The council has contributed £5 million towards the project, with a further £7 million funded through developers' carbon credit contributions. A separate project to make carbon reductions at Botwell Green Leisure Centre in Hayes is being part-funded by Sport England. The works include adding better insulation to the roof and the installation of solar panels, which will be completed by December.



Solar panels at the Winston Churchill Theatre

Decarbonisation in numbers



How do air source heat pumps work?

Air source heat pumps are a green and efficient way of heating indoor spaces using renewable heat that can help lower long-term energy costs and carbon emissions. They use a refrigeration cycle to extract heat from the outside air, even in cold temperatures, and then increase its temperature by compressing it. The resulting heat can

then be used for heating, ventilation and hot water systems. Unlike traditional boilers, air source heat pumps produce lower temperatures than a gas or oil boiler, so they need to run for longer periods to achieve equivalent temperatures and be installed in well-insulated buildings to ensure maximum efficiency.



Heat pump at Hillingdon Sports and Leisure Complex



Solar panels on the roof of Highgrove Pool and Fitness Centre

Cllr Jonathan Bianco, Deputy Leader and Cabinet Member for Property, Highways and Transport, said: "Receiving the largest government grant in London for our decarbonisation project sets down a marker that we're delivering on this pledge and our ambition for the council's operations to be carbon neutral by 2030. "We're committed to creating a green and sustainable borough. This project is an essential, short-term spend but will result in long-term net savings, both financially and environmentally for the council and our residents."



Children and families enjoy a summer of fun



Residents enjoyed an array of events and activities hosted by the council throughout the summer months, including a picnic in the park with live music and performances, a medieval family day, arts and crafts, and sports and library events.

Picnic in the Park

More than 2,000 people attended the council's Picnic in the Park, held on Saturday 29 June at Barra Hall Park in Hayes, enjoying live performances on the bandstand stage and a range of activities for all ages.

The community event, hosted by the Mayor of Hillingdon, Cllr Colleen Sullivan, showcased performances by local schools and dance groups, and offered sports activities, a mobile library, face painting, henna hand painting, Punch and Judy shows, inflatable fun, and arts and crafts for children.

Visitors were encouraged to bring a picnic to enjoy the entertainment, which included performances by



Hillingdon Music Service and a gymnastics display from GLL, who run the borough's leisure centres.

Representatives from the council's family hubs, libraries and children's centres also supported the picnic with additional activities and information stalls.

Cllr Sullivan said: "Thank you to everyone who attended this year's Picnic in the Park, which was the perfect event to bring communities, families and friends together to share food, and enjoy the free entertainment and activities on offer. It was fantastic to see so many people enjoying themselves and making the most of this award-winning Green Flag park."

£2,000 was raised for the Mayor's chosen charities, Radio Hillingdon, and Royal Brompton & Harefield Arts (Hillingdon Branch).

Youth activities

The council offered an array of different sessions during the summer for young people to have fun, make



friends, learn new skills and build their confidence, with activities running from Monday 29 July to Friday 30 August.

Youth sessions ran at Uxbridge Family Hub and Ruislip and Harlington Young People's Centres, with activities including sports, arts, cooking, dance and drama. There was also a chance to take part in the Duke of Edinburgh's Award scheme.

The council's mobile and detached team held basketball, rounders, cooking and art sessions across Hillingdon's parks, including Yiewsley Recreation Ground, Fassnidge Park and Pinkwell Park.



The council also offered its annual Holiday Activities and Food Programme (HAF) to school-aged children (Reception to Year 11) and those up to the age of 18 with special educational needs or disabilities (SEND) in receipt of benefits-related free school meals.



Sessions at Wealdstone Football Club

Working with 44 providers across 74 venues, including theatres, arts facilities and green spaces, the programme delivered its widest ever choice of activities with 21,352 sessional places offered over a six-week period.

In addition to enriching activity sessions, including canoeing, kayaking, film school, coding and robotics, children were provided with a free, daily healthy meal. There were also arts and crafts sessions, and cooking and sports activities for children with SEND.



Family Day at Cranford Park

Family Day at Cranford Park

On Sunday 28 July, more than 600 visitors enjoyed the council's medieval themed Family Day at Cranford Park in Hayes.

They witnessed the excitement of a medieval tournament, with falconry displays, sword fights, archery demonstrations, arts and crafts, and stalls.

Visitors also had fun playing games, dressing up in costumes, and exploring the grounds and rich history of this wonderful park.

Celebrating children's right to play

Playday, the national event which promotes the benefits of play to children's lives, took place on Wednesday 7 August with fun activities and games.

More than 1,800 children and adults joined the free event, which included basketball, golf, cycling, BMX and dance in and around Hillingdon Athletics Stadium in Uxbridge.

Children could see inside a fire engine and police vehicles and visit the mobile library, and an under-fives play area offered arts and crafts, a sandpit and scooters.



Playday 2024

Summer Reading Challenge

This year's Summer Reading Challenge, offered at all libraries across Hillingdon, encouraged children to keep reading during the school holidays to ensure readiness for the autumn term.

The theme was Marvellous Makers, which celebrated creativity, and children were invited to fire up their imaginations and unleash storytelling through the power of reading.

Activities this year included portrait making, junk modelling, storytelling events, and puppet making.



A highlight was The Imagination Station, a free drop-in day of craft activities, storytime sessions, plus fitness and art activities for four to 11-year-olds and their families at Manor Farm, Ruislip.

Cllr Susan O'Brien, Cabinet Member for Children, Families and Education, said:

"I am delighted that we were, once again, able to offer such a wide variety of events and activities across the borough this summer for children and young people.

"It was also wonderful to see so many children enjoying the Summer Reading Challenge at our local libraries. Thank you to everyone who took part, and to our dedicated staff and volunteers who helped run the range of activities on offer."

Find out about events at discover.hillingdon.gov.uk/events



We care for him as if he was ours



CHANGE A LIFE Rachel Slattery and her foster child

Rachel Slattery aged 42 from Hillingdon, and her husband Damian, aged 45, began fostering a newborn baby last year. They invited us into their home to tell us why they decided to foster, and how it's had such a huge impact on family life.

Rachel said: "Years ago, I worked as a social work assistant in the children with disabilities team and one of my roles was to take foster children for days out and activities. I'd always worked with children, but this job made me realise that I'd really like to be a foster carer some day."

"We wanted to wait until the time was right, we needed a spare room, and our own children to be old enough to understand why we were fostering and be on board with the process. When my youngest started high school, it seemed like perfect timing."

Damian added: "I also wanted to foster for a very long time, and we felt now was the right time in our lives to give it a try. I can honestly say, it's the best thing we've ever done!"

Rachel and Damian's first foster child was a newborn baby, and the child still lives with them now. Rachel said: "He was brought to us at just four days old, and he was so small. My youngest had just turned 12 and suddenly I had a newborn, so I had a lot of questions. It was a lot to get used to at first and hard work, but

then it all started coming back to me and I just knew what to do.

"I was given so much support and my social worker was great, but I was also buddied up with another local foster carer which was really helpful. I've been on lots of training courses, mostly online, which has been beneficial, and I've learnt new skills."

With two school-aged children of her own, we asked Rachel how fostering fits around her busy family life. She said: "Babies just slot into your life. I don't work so he is at home with me all the time, but he will come on the school run, and we've enjoyed such lovely experiences together. We go to rhyme time at the library, swimming, and for walks around the park, and we've been on lots of family holidays to the Isle of Wight."

In May, the council introduced an unprecedented payment and benefits package for new and existing foster carers. The package equates to an annual salary up to £72,000, and offers reductions in council tax, bills and a family Platinum Merlin pass.

Rachel said: "The new offer for foster carers is brilliant. Although I don't see this as a job, at the end of the day we've now

got an extra mouth to feed, and babies need a lot of things like nappies and formula. It all adds up.

"Before we fostered, if the house was cold in the winter, then we'd just put another jumper on, but you can't do that with a little newborn baby. So, the winter fuel allowance and money off bills have been so useful.

"I treat this child as if he were my own, and the payments have allowed me to buy a nice pushchair and car seat for him. We also love the Merlin pass, as it allows us to do so much more together with family days out to new places."

A newborn baby may be placed in the council's care for various reasons, such as parental illness, substance abuse, physical abuse, or neglect.

Social workers will endeavour to support the birth parent to address their issues with the aim of unifying the family, but there may be situations where this may not be safe or possible.

The council will then consider the best option to give the child the most stable, loving family environment, whether in the care of immediate or extended family members, or through foster care or long-term adoption.

We asked Rachel how she thinks it will feel when the baby's fostering journey comes to an end. She said: "I am a strong person and not often emotional, but I can't imagine how hard it will be when it's time for him to move on. I know we've given him the very best start we could ever give him, and we hope he has a lovely life."

I've made photo books and memory boxes for him so he can always remember us, he has brought so much joy to our lives. But when the time does come, then there will be another child who needs us."

So how has fostering affected family life for the Slatterys? Rachel concluded: "Fostering is the best thing we've ever done as a family. It has made us better people, and we're a closer family because of it. There are so many children out there who need a loving home."

Damian says he has recommended fostering to all his friends: "I would always recommend fostering to anyone and I'd say if you are thinking about it, then explore the options. It is extremely rewarding."

He fills our lives with fun and joy

We asked Rachel and Damian's birth children what it's like to have a foster child come home to stay with them.

They said:

"There is never a boring moment, he fills our lives with fun and joy and a newfound love even though he is not actually ours."

"It has been so much fun, and he has never failed to put a smile on my face, even if it is when he is just babbling to the TV or having a laugh with his jungle gym."

Why are so many foster carers joining Hillingdon?

Hillingdon Council has the most competitive payment and benefits package in England, for both new and existing foster carers, equating to an annual salary up to £72,000.

This includes:

- payments up to £1,500 per week

- 25 per cent off your council tax bill
- £1,000 off utility bills
- an annual family Merlin pass
- winter fuel allowance
- more than 100 training courses.



Find out more about fostering at www.hillingdon.gov.uk/fostering





A family hub mentoring session for young people

HILLINGDON FAMILY HUBS

Specialist support for parents and families

The council's family hub network offers a range of activities for children and young people, as well as sessions for parents and families who require additional help. We met with local residents who are already benefiting from these services.

Targeted programmes for young people

Support for young people over the age of eight is delivered by the Hillingdon Youth Offer, and may include counselling sessions, addiction support groups for children living with parental substance misuse, and art sessions for young people struggling with anxiety.

We met with a 20-year-old resident, who wishes to remain anonymous, to find out how one-to-one counselling sessions have helped them through challenging times.

They said: "Counselling has changed my life. I suffered with unexplainable anxiety for years and could not relax my nervous system. I also had intense and frequent nightmares, which was caused by being bullied throughout my childhood.

"After around nine sessions, I now have a new outlook on life. My anxiety has decreased significantly

and so have the nightmares. This has also helped my self-esteem and confidence, as well as being able to calm down, which has given me a newfound sense of peace. I really recommend this to anyone who is struggling as this was extremely beneficial for my mental health."

Young people may be referred to support services by other professionals, such as teachers, youth



A family hub cooking session

workers or health workers, and parents and young people can self-refer online on the council's website (see link below).

Lucy Marie, aged 14, attends the council's Achievement through Individual Mentoring Support (AIMS) programme at Uxbridge Family Hub.

She said: "Before I started to have sessions with my mentor, Ray, I hardly went anywhere voluntarily for an outside of school club or activity. I never used public transport alone and I hardly talked to people I didn't know.

"However, since I joined the art group and Saturday club, as well as seeing my mentor each week, I now use public transport and have become more independent, and I can talk to new people too."

For information on support for young people, visit www.hillingdon.gov.uk/targeted-programmes

Younger children's development

Sessions for younger children include help with speech, attention and listening skills and support for those with additional needs and disabilities.

Grace, from Northwood, has three-year-old Remi (pictured below) and attends the children's centre in Eastcote. She said: "I started to attend Attention Hillingdon sessions for support with his attention and listening, and it has made the biggest difference.

"I can see Remi really enjoying the routine, starting to focus more and anticipate what will come next in the session. I have really enjoyed seeing Remi play and interact with other children just as much as I have enjoyed meeting the other parents. I will be using the online course that supports parents to understand autism spectrum disorder."



Where can parents go for help?

A range of programmes may be offered to parents who require additional support, including a parenting course, sessions offering emotional support to mothers, or an English for Speakers of other Languages (ESOL) class.

Lisa, from Hillingdon (pictured below), has two children, Anabella and Greyson, and went on a Family Links parenting course. She said: "The course has helped me to be



more patient as a parent and given me a greater understanding of my children's emotional development."

Elena, from Ruislip (pictured above), has a three-year-old daughter Emma. She said: "I have enjoyed coming to parenting groups like ESOL, as it has really helped me build my self-confidence and self-esteem. I can now have a conversation with teachers and people at the shops, so my English is a lot better."

Hannah with baby Dylan (pictured below), from West Drayton, received support with her mental health from the family hub network. She said: "The family hubs have been amazing at allowing me to access support and advice, as well as offering classes that benefit my wellbeing and the development of my baby."



The family hub network consists of hubs in Uxbridge and Hayes, 10 children's centres for under-fives located across the borough, youth outreach support in the community, plus a range of online courses. For more information, visit www.hillingdon.gov.uk/family-hubs

Parenting programmes

Sessions are available to support and guide parents through various stages of their child's development.

Families with younger children

'Family Links, The Nurturing Programme' is designed for parents and carers of children up to eight-years-old and promotes understanding, skills and the ability to lead emotionally healthy lives.

Your Bump and Beyond

A fun and interactive workshop for expectant parents to learn about caring for your baby.

Male parents and carers

A parenting group for dads, grandads, and other male carers and children aged up to five-years-old to enjoy activities, games, and garden play.

Positive Parenting Programme

Brilliant Parents, an organisation partnered with the council, offers 'The Triple P' positive parenting programme which provides a toolkit of strategies to improve family life. One-off sessions for parents of children aged five to 16 years are also available.

Young people at risk

Brilliant Parents also offers support to parents of children aged 10 to 18 years who may be at risk or vulnerable to risk of exploitation.

Separation support

The Parenting Apart Programme is available to parents who are going through conflict, divorce or separation, where relationships have broken down, and supports the emotional wellbeing of children.

Families with SEND children

A range of courses are available to support parents with children with SEND, as well as drop-in sessions providing information and advice.

For information on support for parents, visit www.hillingdon.gov.uk/stronger-families-hub

For support for families with SEND, visit careandsupport.hillingdon.gov.uk



Thriving, healthy households



PRODUCTION Young people enjoying the media bus at Botwell Green Library

Improving health and fitness in Hayes and Harlington

Children and young people in Hayes and Harlington are enjoying healthier lives thanks to a new initiative which aims to improve the environments around schools.

The council has partnered with local schools, faith groups, and community organisations to deliver a range of activities and projects that promote walking and cycling, healthy eating, and staying active.

Funded by the Greater London Authority, School Superzones are initiatives around schools which focus on protecting children's health and encouraging healthy behaviours through local partnership working between schools, the council, and wider health, faith and voluntary organisations.

Last year, the council received £58,000 to fund two year-long projects: the Minet School Superzone and Harlington Superzone.

Minet School Superzone in action

The Minet School Superzone is a partnership between Minet Infant and Nursery School, Minet Junior School, Botwell House Primary School, Hayes Muslim Centre, St Anselm's Church, and the team from Botwell Green Library.

Here are a few of the highlights:

Active travel

- Grants have been provided to Minet Infant and Nursery School, Minet Junior School and Botwell House Primary School enabling them to purchase scooters, balance bikes, helmets and storage sheds, and fund scooter and Bikeability training.
- 12 residents have been trained as cycle leaders.
- A map has been created for Botwell Green Library, Minet Junior and Minet Infant schools showing walking distances to local parks. It is hoped that this will encourage residents to enjoy the free opportunities available, such as parkrun, outdoor fitness, outdoor gyms, and play in the borough's award-winning green spaces.

Healthy eating

- New gardening tools and a garden shed have been provided to Minet

Junior School to support their new food growing project.

- A healthy recipe book has been created with families from the junior school. The publication has been sponsored by developer, Higgins Partnerships, which is delivering the council's redevelopment of Avondale Drive and Hayes Town Centre estates.
- Using healthier recipes in cooking sessions at Minet Junior School. The council has also been working with caterers to provide healthier desserts, and offering parents and carers suggestions for healthier packed lunches.
- A grant has been provided for a community growing project at St Anselm's Church.

Staying active

- A free Box Fit programme for teenagers has been launched at Botwell Green Library, which helps young people to stay active and improve their health and wellbeing.



Spotlight on Hayes Muslim Centre

Hayes Muslim Centre is working with the council to adopt a sustainable approach to improving food and drink choices for its 700 attendees.

The centre has become 'water only' and has promoted reducing sugar intake. The Imam has also supported the project by providing health awareness material and weekly messages on topics, such as portion size, food labels, food groups and healthy swaps.

The Muslim Centre sisters (pictured left) have participated in chef-led cooking sessions to learn healthier alternatives to traditional dishes and are sharing the new recipes with the community. They have also planned to offer healthier snacks to their youth group. **They said:**

"I learnt to use sunflower oil instead of coconut or vegetable oil."

"I learnt what processed food is and that fresh is much healthier"

"I learnt that using light soy sauce is better as it has less salt in it."

Harlington Superzone in action

The Harlington Superzone has seen teams from Harlington Young People's Centre and Botwell Green Library work with Harlington School to improve Pinkwell Park and make it more attractive and accessible for children and young people.

Council youth workers and Harlington School staff have worked with local young people to co-produce a programme of improvements and activities to encourage children and families to use the park.

This included:

- new signage at the park entrances
- a resurfaced and repainted basketball and football court
- two engagement sessions with students from Harlington School to identify barriers to using the park and activities they would like to see available
- two activity days during May half-term supported by council youth workers, with coach-led basketball, Box Fit and skateboarding sessions
- a six-week sports leadership programme delivered by Our Parks.

Other projects:

- a basketball coach-led session at the park as part of the council's summer holiday youth offer

- Harlington School and staff from the council's youth team have collaborated to offer a sports leadership programme to students
- coffee morning sessions at the school have encouraged residents to find out more about the support available to them
- a media bus at Botwell Green Library, provided by the Young Urban Arts Foundation, is giving young people the opportunity to explore their thoughts on community safety through lyric writing, music production and podcasting.

Our young people said:

"It was brilliant, fun, educational, interesting and works your brain. I was inspired to use music to think."

"The people on the bus were very welcoming and I got to talk about stuff I can't with my parents."

"It was a free space where we got to enjoy making and recording music and podcasts."



Box Fit at Botwell Green Library

Cllr Jane Palmer, Cabinet Member for Health and Social Care, said:

"These two initiatives are delivering tangible benefits for our children and young people and their families in Hayes and Harlington.

"They demonstrate our commitment to working with partners, including schools, to deliver a range of innovative programmes that help improve the health and wellbeing of our residents and support safe and strong communities."



Resurfaced court at Pinkwell Park



Thriving, healthy households

Homes with care on hand when you need it

Our extra care flats offer all the comfort and privacy of your own home, with the added security and peace of mind of professional care.

If you're a Hillingdon resident that wants to live independently but have care and support needs, extra care housing could be for you.

To find out more and see a video tour of each scheme, visit www.hillingdon.gov.uk/extracarehousing



Park View Court, Yiewsley

www.hillingdon.gov.uk



HILLINGDON LONDON

Plans approved for enhanced and more accessible Uxbridge Library



SNAPSHOT Artists' impression of the new-look Uxbridge Library

In July, the council's Planning Committee granted planning permission for Uxbridge Library to be relocated to the Civic Centre, offering residents a more accessible and sustainable service.

The library's new location in the former Middlesex Suite, just 300 metres from its current position on the high street, will not only facilitate current services but also offer:

- additional space for exhibitions and events
- a learning centre
- a dedicated children's library
- use of the wider Civic Centre space for activities.

The initial proposals were revised following feedback from residents to extend the available space, so the council's Register Office will be relocated to the floor below and the space will be used to accommodate the museum, local studies and archives service, study spaces, and a dedicated area for the popular Tovertafel interactive tabletop projection facility.

The new and improved site will offer step-free access with all facilities available on one level and allow

residents to access a wider range of services all under one roof, with essential council services, including Uxbridge Family Hub and Uxbridge Adult Education Centre, situated alongside the library.

Plans for the library's relocation were initially agreed by the council's Cabinet in February, following a report that the current building was not compliant with equalities or health and safety at work legislation due to the lack of fire evacuation lifts across six floors.

Cllr Eddie Lavery, Cabinet Member for Residents' Services, said:

"These plans will deliver a first-class library for residents that is modern, enhanced, safer, more accessible and will save taxpayers' money in the long-term.

"While many local authorities have closed their facilities, we remain committed to enhancing our library service as we continue to put residents first."

Discover the new library

Architects have created a fly-through video to show you what the new space will look like. Scan the QR code to take a tour.



For more information, visit www.hillingdon.gov.uk/uxbridge-library-relocation



JOIN US FOR HALF-TERM FUN!

Monday 28 October to Sunday 3 November, 10am to 4.30pm

Take part in trails, crafts and workshops. There'll be an area especially for under-5s too.

Free admission for under-16s

Wren Avenue, Uxbridge, UB10 0GG

battleofbritainbunker.co.uk

01895 238154



THE BATTLE OF BRITAIN BUNKER



Keeping well during the colder months

Flu and COVID-19 can be very serious, make sure you add your vaccinations to your winter wellness routine.

From September, young children, those pregnant and under-18s who are at clinical risk will be invited for their vaccinations.

From early October, over-65s and others who are at risk will be invited.

When you receive your invite, book your vaccination appointments as soon as possible to give you the most protection during the colder months.

Frequently asked questions

I have had the vaccines before, why do I need another one?

Both vaccinations form a regular annual part of keeping well during winter. If you are invited to have them, it is important to top up your protection (even if you have had a vaccine before), as immunity fades over time and the viruses change each year.

Can I have the flu and COVID-19 vaccines at the same time?

If you are eligible for both and offered them at the same time, it is completely safe to do so.

I've heard the vaccinations hurt and can make you feel unwell

You may feel a small scratch when you have the vaccination and some people have mild aches or flu-like symptoms afterwards. Taking paracetamol ahead of your vaccinations and in the hours after will help improve these mild symptoms.

Will the flu jab give me flu?

The flu jab cannot give you the flu – it is an inactivated vaccine. It does not contain any of the live flu virus.

Do the vaccines contain pork?

The flu and COVID-19 jabs do not contain any pork ingredients or gelatine. Only the flu nasal spray for children includes porcine gelatine. The British Fatwa Council has permitted the use of the nasal spray in children and there is also

an alternative vaccine available for children which does not include porcine gelatine.

I'm pregnant, will the vaccinations harm me or my baby?

No, having the flu and COVID-19 vaccines will help protect you and your baby. They are safe to have at any stage of pregnancy.

How do I get my vaccinations?

You will be contacted by the NHS if you are eligible for a vaccination. You can use the NHS App, speak to your local pharmacy or contact your GP practice to book. More information is available at [nhs.uk](https://www.nhs.uk).

From September, there will also be the new rollout of the Respiratory Syncytial Virus (RSV) vaccine. This will be for those over 75 and those pregnant (over 28 weeks) to help protect their newborn babies.



IMPROVED The refurbished bandstand at Barra Hall Park

Enhancing your parks

Work has begun on a £1 million enhancement programme to deliver improvements to several green spaces across the borough.

In February last year, the council announced its intention to invest £1 million on a park enhancement programme as part of plans to mark the borough's Diamond Jubilee, which takes place next year.

The funding will be split across five green spaces with improvements across each site, including replacement waste bins, dog waste bins and benches, upgraded pathways and the planting of thousands of bulbs to create more than three square kilometres of daffodil and crocus displays each spring.

Other improvements will be tailored to the individual parks and are being finalised.

The five parks included in the programme are:

- 1 Barra Hall Park, Hayes
- 2 Bessingby Park, Eastcote
- 3 Churchfield Gardens, Ruislip
- 4 The Closes, West Drayton
- 5 Fasnidge Park, Uxbridge.

The first park to benefit from the new programme was Barra Hall Park, where the bandstand underwent a

full refurbishment, completed just in time for the Mayor's Picnic in the Park event in June.

Works were also undertaken to improve the adjacent sunken garden and plans are also being considered to demolish the old, closed toilet block building to return it to park space. Further improvements are being scoped and finalised.

Works as part of the park enhancement programme are set to get underway next at Bessingby Park. This location is earmarked for a range of upgrades, including improvements to its pathways, more seating for visitors and new signage at the entrance.

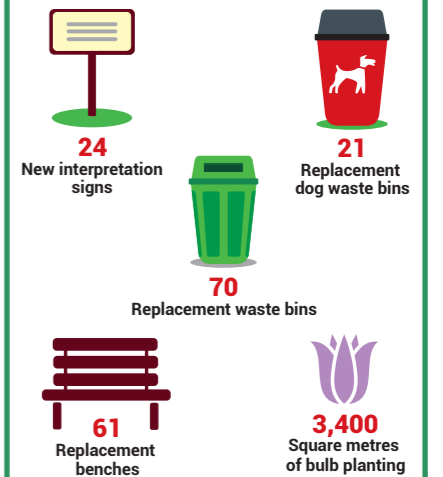
At Fasnidge Park, the council is exploring a potential refurbishment of the outdoor gym that was installed in 2012, as well as moving some of the hanging basket poles which are currently obscured by trees to ensure their displays can be fully appreciated.

Works for the park enhancement programme are scheduled for completion by the end of the financial year.

Cllr Eddie Lavery, Cabinet Member for Residents' Services, said: "We're continuing to create a greener future for current and future generations of residents. Our park enhancement programme will further improve the experience for those visiting our parks and builds on the hard work we've established over the past decade to deliver some of the best parks in the country."

Improvements in numbers

Through the programme, the council will deliver:



Top spot for Green Flags

The council has received the most Green Flag Awards in the UK for its parks and green spaces for the twelfth year in a row.

The annual awards recognise parks with the highest standards for facilities, cleanliness and environmental friendliness.



Cllr Lavery and green spaces officers

Find your nearest park or discover new ones to explore at www.hillingdon.gov.uk/local-parks

A green and sustainable borough

CHANGE NEEDS YOU

SEARCH MET CAREERS

REGULAR AND VOLUNTEER POLICE CONSTABLES

METROPOLITAN POLICE MORE TRUST LESS CRIME HIGH STANDARDS

New recycling bag delivery service

Earlier this year, we launched our improved automatic recycling bag delivery service.

Personalise your new subscription to match your household's usage and help reduce carbon emissions.

If you signed up before February 2024, you'll need to re-register and new subscribers can sign up at www.hillingdon.gov.uk/automatic-bag-deliveries





www.hillingdon.gov.uk

We are recruiting

Join our great teams in putting residents first

Search latest jobs at www.hillingdon.gov.uk/jobs





www.hillingdon.gov.uk

Crackdown on anti-social behaviour

Using local intelligence and reports from residents, the council's street scene enforcement team is taking action to clamp down on anti-social behaviour. *Hillingdon People* joins the team on one of their operations.

The council's street scene enforcement team gathered on Coldharbour Lane in Hayes on Tuesday 6 August ready to patrol the high street, armed with bright red 'no dumping' posters and waste and recycling collection guides, to investigate residents' reports of ongoing fly-tipping incidents in the area, witness and fine perpetrators of anti-social behaviour and engage with local people.

The team was joined by officers from environmental enforcement and waste and recycling services and Cllr Eddie Lavery, Cabinet Member for Residents' Services.

At the corner of Hunters Grove, the patrol discovered a significant fly-tip (pictured below) containing a mixture of large items including a mattress and a fridge, and smaller bags of household waste. With the waste removal team alerted, officers began to document the scene, taking photographs and collecting samples to determine the waste's origin.

Fly-tipping is the illegal disposal of rubbish anywhere, on any land, with no intention of having it cleared. The council has a zero-tolerance approach to fly-tipping and is responsible for the enforcement and clearance of rubbish on council land, including roads, pavements, public car parks, green spaces and council housing estates. If the rubbish is on private land, it is the landowners' responsibility to remove, however the council can investigate and prosecute offender/s.



Cllr Lavery and waste and recycling officers

In April, the council introduced a larger maximum fine of £1,000 for an individual caught fly-tipping, and in more serious cases perpetrators will be prosecuted through the courts.

Within minutes of investigating the area, a fly-tipper was caught red-handed adding their household rubbish to the pile. The team sprung to action and a fine was issued.

Responsible disposal

The council offers free, weekly waste and recycling collections, larger amounts of waste can be taken to Harefield Civic Amenity Site or the West Drayton waste weekends, and the council also has a bulky waste collection service for bigger items.

Businesses can sign up to our trusted and efficient commercial waste and recycling service.

Find out more at www.hillingdon.gov.uk/rubbishandrecycling.

During their patrol, officers also introduced themselves to business owners on the high street to establish how they are managing their waste.

All businesses are legally responsible for ensuring any waste they create is collected and disposed of correctly, this is known as the 'waste duty of care'. To comply with the regulations, businesses must ensure waste is collected by a licensed waste carrier and keep a record of the waste transfer.

Despite the strict rules and threat of a hefty fine, between May and July, the team issued 17 Fixed Penalty Notices to business owners for failing to produce accurate waste documents.

Last month's operation is just one example of the many which have taken place since the beginning of the year.

Working alongside local partners, such as the Metropolitan Police, London Fire Brigade and Transport for London, they give council officers the opportunity to speak directly to residents about issues in their neighbourhood.

Cllr Lavery said: "We pride ourselves on being a well-maintained borough and share residents' frustrations that the actions of a minority of irresponsible people harms our environment and disrupts our neighbourhoods.

"These new operations allow us to listen to your concerns and work quickly with local partners to keep our borough looking clean and pleasant while raising awareness to discourage anti-social behaviour in the first place."



Report anti-social behaviour at www.hillingdon.gov.uk/report

 Safe and strong communities

HILLINGDON WHAT'S ON?

Find out about more events happening locally at *discover.hillingdon.gov.uk/events*.



LEISURE

BATTLE OF BRITAIN BUNKER

COMMEMORATIVE WEEKEND

Saturday 14 and Sunday 15 September, 10am to 4.30pm

Commemorative events and tours in remembrance of the 84th anniversary of the Battle of Britain.

Cost: Included in the price of admission.

To book, visit battleofbritainbunker.co.uk/whats-on.

SOUTHLANDS ARTS CENTRE

PAPER MAKING

Thursday 19 September, 10am to 3pm

A workshop demonstrating the basics of recycling egg boxes into beautiful handmade papers. Learn how to create vats of pulp, make paper incorporating petals, foliage or glitter, use moulds and deal with sheets, on and off the post. Participants will take home a variety of paper sheets and the knowledge to start papermaking at home.

Cost: £35.

To book, visit www.craftcourses.com/courses/papermaking-for-beginners.

THE GREAT BARN RUISLIP

CELEBRATION OF LOVE STORIES

Saturday 21 September, 6.30pm to 7.45pm

Now in its second year, Hillingdon Libraries host an evening with three talented romantic fiction authors Eva Verde, Holly Miller and Isabelle Broom.

Cost: £5.

To book, visit discover.hillingdon.gov.uk/love-stories.

COMPASS THEATRE

DEMENTIA FRIENDLY DAYTIME DISCO

Tuesday 24 September, 1pm to 3pm

Friendly and fun session for those living with dementia, and their carer. Music provided by Brian Rowan, singing and playing songs from the 60s, 70s and 80s.

Cost: £5 – book your one free carer ticket at the same time.

To book, visit discover.hillingdon.gov.uk/dementia-disco or call 01895 250615.

BAILEY HALL

PARKINSON'S UK, HILLINGDON

Wednesday 25 September, 2pm to 4pm

Monthly meeting for people with Parkinson's and their

carers. Meetings are held on the last Wednesday of each month and attendees can take part in a variety of activities, including games, quizzes and speakers. To book, call 01895 810608.

RUISLIP MANOR LIBRARY

OH, FOR THE LOVE OF BOOKS!

Thursday 26 September, 7.30pm to 8.30pm

An evening with three authors, Kate Storey, Annie Lyons and Louise Fein, who have recently written stories where books are an integral part.

Cost: Free. (Open to adults).

To book, visit discover.hillingdon.gov.uk/love-books.

OAK FARM LIBRARY

AN EVENING WITH CRIME AUTHOR LEIGH RUSSELL

Thursday 26 September, 6pm to 6.45pm

In celebration of National Crime Reading Month, join us in conversation with award-winning crime author Leigh Russell. We will be talking to Leigh about her popular Geraldine Steel Crime series and her cosy crime series inspired by a rescue puppy dog, followed by an audience Q&A.

Cost: Free. (Open to adults).

To book, visit discover.hillingdon.gov.uk/evening-with-leigh-russell.

WOODLAND CENTRE

WILDLIFE WALKS AND HALF-TERM ACTIVITIES

Selected dates in September, October and November

Ruislip Lido will be hosting wildlife walks for adults on Friday 20 September and Monday 14 October at 10am, and an evening wildlife walk for families with children aged four and above on Saturday 28 September at 5.30pm. During November half-term, children's activities, games and craft making sessions will be held in the Woodland Centre for families with children aged four and above on selected dates.

Cost: Free.

To book, call Diana on 07736 974497 or visit www.hillingdon.gov.uk/ruislip-walks.

CRANFORD PARK

THE GREY LADY GHOST WALK

Thursday 31 October, 4pm to 7pm

As the sun begins to set, the ghosts appear in Cranford Park. Are you brave enough to enter the woods? Join us for a guided walk with costumed performers. Suitable for adults only. Book one of three, one-hour sessions. Maximum 15 people per session.

Cost: Free, but booking is essential.

To book, email pmcgarrity@hillingdon.gov.uk or call 07984 653888.

THEATRE

WINSTON CHURCHILL THEATRE

DEAR DIARY...

Wednesday 25 to Saturday 28 September, 7.30pm (Saturday matinee, 2.30pm)

Following the life of a girl growing up in Hillingdon Musical Society, in true compilation style, and celebrating the long life of the society, 'Dear Diary...' includes iconic songs from musicals performed over the last 90 years, including *The Wedding Singer*, *Made in Dagenham*, *Fame* and *Mean Girls*. Celebrate 90 years of Hillingdon Musical Society!

Cost: £17. £15 concessions.

To book, visit www.hillingdonmusicalsociety.co.uk.



WINSTON CHURCHILL THEATRE

LEGENDARY CLASSICS

Saturday 12 October, 7.30pm

Hillingdon Philharmonic Orchestra invites you to a concert of legendary classics to include Haydn's pioneering *Trumpet Concerto*, for which the orchestra is delighted to be joined by soloist Ian Lynch. The

programme will also include Beethoven's magnificent *Symphony No. 5* and Mozart's Overture to *The Magic Flute*.

Cost: Adults £15. Under-18s free.

To book, visit discover.hillingdon.gov.uk/legendary-classics.



COMPASS THEATRE

IT RUNS IN THE FAMILY

Wednesday 13 to Saturday 16 November, 7.45pm

It's three days before Christmas and Dr Mortimore is to deliver the most important speech of his life, which should earn him a knighthood. But then enters Jane Tate, an old flame with a son he never knew he had! Combine this with a police sergeant, a severe hospital matron and his wife and you have all the ingredients for this riotous comedy presented by Ruislip Dramatic Society. Farce at its finest from the Master, Ray Cooney.

Cost: £14. Over-60s (Wednesday and Thursday only) £13.

To book, visit discover.hillingdon.gov.uk/runs-in-family or call 01895 250615.

HEALTH AND FITNESS

OAK FARM LIBRARY

YOUNG AT HEART YOGA WITH LORETTA

Tuesdays and Wednesdays, 10am to 11.30am

Whether you are a beginner or experienced, whatever your age and fitness, come

WINSTON CHURCHILL THEATRE

WIND IN THE WILLOWS

Wednesday 30 October, 7.30pm to 10pm

Based on Kenneth Grahame's bestselling book, *The Wind in the Willows* follow Mole, Rat, Badger and the impulsive Mr Toad, whose insatiable need for speed lands him in serious trouble. Full of wit, a gorgeous, soaring score

from Stiles and Drewe, and heartwarming lessons of friendship, this riotous musical comedy is perfect for families.

Cost: £14 to £18.

To book, discover.hillingdon.gov.uk/wind-in-the-willows.



and get a spring in your step and peace in your mind!

Cost: £10 per class

paid in a block.

To book, email lorettayoga6@gmail.com or call 020 8845 7873.

THE NORTHWOOD CLUB, DARWIN WELLNESS

ZUMBOLLYWOOD DANCE AND FITNESS

Every Wednesday, 7.45pm

A one-hour high cardio, fun and easy to follow Zumba and Bollywood-based dance workout.

A place to exercise, dance, have fun, listen to great music, and make new friendships!

Cost: £10 per class or £8 when you get a five class Zumbollywood pass.

To book, email info@zumbollywood.com or call 07843 526679.

CHILDREN AND FAMILY

EASTCOTE LIBRARY

COMIC CLUB

Tuesday 8, 15 and 22 October, 4pm

Join us for a fun session chatting about and drawing

your favourite comic book characters or creating your own. Suitable for children aged seven and above.

Cost: Free.

To book, email eastcotelibrary@hillingdon.gov.uk.



CRANFORD PARK

SPOOKY CRANFORD

Thursday 31 October, midday to 4pm

Spooky family fun for all ages. Listen to creepy stories, follow the terrifying trail and try to catch a glimpse of the fabled ghost of the grey lady. Cost: Free, no need to book.

MCGOVERN PARK

FIREWORKS DISPLAY

Friday 1 November, gates open 4.30pm (display 7.30pm)

Celebrate Bonfire Night with a spectacular fireworks display by award-winning Phoenix Fireworks, themed around Monsters. Enjoy a funfair, UV glow party, monster meet and greet, face painting, Irish dancing, live music, clairvoyant, food stalls, bars and UV disco.

Cost: Adults £9, children £6, family £26, group £32.

To book, visit www.mcgovernpark.com.



PAVILIONS SHOPPING CENTRE

DAY OF THE OLDER PERSON

Tuesday 24 September, 10am to 4pm

Celebrate older people and their contributions to our community with a day of free activities and information stalls from organisations such as Age UK, Alzheimer's Society and Carers Trust Hillingdon. The day will be opened

by the Mayor of Hillingdon and host taster activities, including walking football, a local heritage walk and song performances.

Cost: Free.

No need to book, just turn up.



VENUES

BAILEY HALL

Christ Church, Redford Way, Uxbridge, UB8 1SZ

BATTLE OF BRITAIN BUNKER

Wren Avenue, Uxbridge, UB10 0BE

COMPASS THEATRE

Glebe Avenue, Ickenham, UB10 8PD

CRANFORD PARK

The Parkway, TW5 9RZ

EASTCOTE LIBRARY

Field End Road, Eastcote, HA5 1RL

MANOR FARM LIBRARY

Bury Street, Ruislip, HA4 7SU

MCGOVERN PARK

West End Road, Ruislip, HA4 6QX

OAK FARM LIBRARY

Sutton Court Road, Hillingdon, UB10 9PB

PAVILIONS SHOPPING CENTRE

18 Chequers Square, Uxbridge, UB8 1LN

WOODLAND CENTRE

Ruislip Lido, Reservoir Road, Ruislip, HA4 7TY

RUISLIP MANOR LIBRARY

Linden Avenue, Ruislip Manor, HA4 8TW

SOUTHLANDS ARTS CENTRE

75 The Green, West Drayton, UB7 7PW

THE GREAT BARN, MANOR FARM

Bury Street, Ruislip, HA4 7SU

THE NORTHWOOD CLUB, DARWIN WELLNESS

22 Chestnut Avenue, Northwood, HA6 1HR

WINSTON CHURCHILL THEATRE

Pinn Way, Ruislip, HA4 7QL

Sign up for our e-newsletters

Be in the know and join the 54,000 residents who have registered to receive our online updates on a range of topics.

Sign up now at www.hillingdon.gov.uk/enews




www.hillingdon.gov.uk

FIRST CLASS LEARNING

Ickenham UB10 & Ruislip HA4 LEARNING CENTRE

Whatever your tuition needs, we can give your child a head start, help them excel or overcome challenges.

CONTACT KAY PATEL TODAY FOR YOUR SKILLS ASSESSMENT

07976 160 078

ickenham@firstclasslearning.co.uk
www.firstclasslearning.co.uk/ickenham



HillingdonFirst
The privilege card putting residents first



PayByPhone is here.
Download the app and link your **HillingdonFirst** card.

Simply



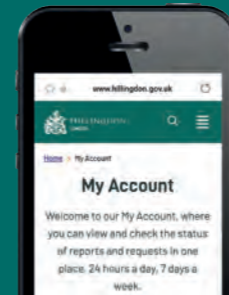
Need to contact us? Join the thousands choosing to do it online

It's quicker and easier to report issues to us online. By registering for a Hillingdon MyAccount, you can view and check the status of your reports and requests in one place.

Sign up today at www.hillingdon.gov.uk/myaccount.

You can:

- tell us about a problem in your road
- report fly-tipping or anti-social behaviour
- request recycling bags
- order a new HillingdonFirst card and much more...



USEFUL CONTACTS

Adult education
www.hillingdon.gov.uk/adultlearning

Benefits
www.hillingdon.gov.uk/benefits

Births, deaths and ceremonies
www.hillingdon.gov.uk/births-deaths-ceremonies

Businesses and licensing
www.hillingdon.gov.uk/business

Councillors, meetings and consultations
www.hillingdon.gov.uk/council

Council tax
www.hillingdon.gov.uk/counciltax

Families' Information Service, fostering and adoption
www.hillingdon.gov.uk/families

Fraud Hotline
www.hillingdon.gov.uk/report-fraud
0800 389 8313

Health and wellbeing
www.hillingdon.gov.uk/health

Housing Services
www.hillingdon.gov.uk/housing
01895 556666

Hillingdon Social Care Direct (adults) (including TeleCareLine and Meals Service)
www.hillingdon.gov.uk/socialcare
01895 556633

Leisure (including parks, leisure centres, theatres and events)
www.hillingdon.gov.uk/leisure

Libraries
www.hillingdon.gov.uk/libraries

Planning and Building Control
www.hillingdon.gov.uk/planning

School admissions
www.hillingdon.gov.uk/schooladmissions

Stronger Families Hub
www.hillingdon.gov.uk/stronger-families

Transport, roads and parking
www.hillingdon.gov.uk/transport

Mental health support

Hillingdon Mind
01895 271559

Samaritans
116 123 (freephone)

Are you looking for good quality furniture or electricals?
Or do you have some you want to donate?



For a free and friendly collection call your nearest branch - open 6 days a week

We recycle quality unwanted furniture and electricals. We provide paid employment and training to disadvantaged people and excellent quality furniture at fantastic prices to you. Visit our stores today!

trinity
HOME + PEOPLE + JOB

Uxbridge: 01895 256655
Hayes: 020 8797 9505
www.wearetrinity.org.uk
[facebook.com/trinityfurniturestore](https://www.facebook.com/trinityfurniturestore)

Discover exceptional dental care with Denpure

Your oral health is crucial for your overall wellbeing. At Denpure, our polite and caring dental team is dedicated to providing you with the best care possible.

Exclusive offer with code SMILE24:

- Check-up: only £25 (normally £35)
- Free intraoral scan: worth £85
- Free small x-rays: worth £10 each *
- Free OPG (Panoramic) x-ray: worth £45*

*if clinically necessary.

Save up to £160 on quality dentistry



Book your appointment today:

- Call us on 01895 678889/01895 673956
- Email us at info@denpure.co.uk
- WhatsApp via our website www.denpure.co.uk

denpure
Dental Care & Implant Centre

Denpure Dental Care and Implant Centre
77 Swakeleys Road, Ickenham, UB10 8DQ

Going digital

The UK's old telephone lines are being replaced with a digital network by telephone providers, which may affect some of the services you use, including TeleCareLine.

Find out more at www.hillingdon.gov.uk/digital-switchover




HILLINGDON
LONDON

www.hillingdon.gov.uk

IT'S NOT TOO LATE...

ENROL

NOW



SCAN HERE



UXBRIDGE
COLLEGE

**IT'S NOT TOO
LATE TO JOIN US!**

We still have places available on some of our courses so there is still time to enrol

- * A-Levels
- * Courses for Careers
- * T-Levels
- * Apprenticeships
- * HNCs & HNDs.

Scan the QR code for dates and times to come in for advice and enrolment.

